

LOCATION

COL.1: OPENING NUMBER

COL.2: LOCATION

COL.3: FROM or TO

F = FROM
T = TO

COL.4: LOCATION

GENERAL

COL.5: QUANTITY REQUIRED

**COL.6: NOMINAL DOOR
OPENING DIMENSION**

COL.7: ACTUAL HAND & SWING

FRAME DATA

COL.8: SERIES/PROFILE

- SU = STANDARD PROFILE UNEQUAL RABBET FRAME
- SQ = STANDARD PROFILE EQUAL RABBET FRAME
- SR = STANDARD PROFILE SINGLE RABBET FRAME
- SC = STANDARD PROFILE CASED OPEN FRAME
- DU = DRYWALL PROFILE UNEQUAL RABBET FRAME
- DQ = DRYWALL PROFILE EQUAL RABBET FRAME
- DR = DRYWALL PROFILE SINGLE RABBET FRAME
- DC = DRYWALL PROFILE CASED OPEN FRAME
- BQ = BEFORE DRYWALL PROFILE EQUAL RABBET FRAME (APPLIED ANCHORS)
- BU = BEFORE DRYWALL PROFILE UNEQUAL RABBET FRAME (APPLIED ANCHORS)
- BR = BEFORE DRYWALL PROFILE SINGLE RABBET FRAME (APPLIED ANCHORS)
- BC = BEFORE DRYWALL CASED OPEN FRAME
- SE1,2 = DOUBLE EGRESS PROFILE FRAME
- BE1,2 = DOUBLE EGRESS PROFILE FRAME
- TQB = STANDARD PROFILE EQUAL RABBET THERMAL BREAK FRAME
- TRB = STANDARD PROFILE SINGLE RABBET THERMAL BREAK FRAME
- SQW = STANDARD PROFILE EQUAL RABBET WEATHERSTRIPPED FRAME
- SRW = STANDARD PROFILE SINGLE RABBET WEATHERSTRIPPED FRAME
- DQW = DRYWALL PROFILE EQUAL RABBET WEATHERSTRIPPED FRAME
- DRW = DRYWALL PROFILE SINGLE RABBET WEATHERSTRIPPED FRAME
- BQW = BEFORE DRYWALL PROFILE EQUAL RABBET WEATHERSTRIPPED FRAME (APPLIED ANCHORS)
- BRW = BEFORE DRYWALL PROFILE SINGLE RABBET WEATHERSTRIPPED FRAME (APPLIED ANCHORS)
- XXX = SPECIAL PROFILE, SPECIAL RABBETS
- WRP = WATER RESISTANT HANDED FRAME

HANDING DIAGRAMS

"KS" = KEY SIDE

SUFFIX "A" = ACTIVE LEAF OF PAIRS

COL.9: GAGE, MATERIAL AND FINISH

- _CRS = _GA. COLD ROLLED STEEL
- _A60 = _GA. A60 GALVANNEAL STEEL
- _G90 = _GA. G90 GALVANIZED STEEL
- _S01 = _STAINLESS STEEL 304-4
- _S02 = _STAINLESS STEEL 316-4
- _S05 = _STAINLESS STEEL 304-8
- _S06 = _STAINLESS STEEL 316-8

"_" represents steel gage (12,14,16,18)

Common codes shown; additional gages, material and finishes available.

COL.10: FRAME DEPTH

- 300 = 3"
- 434 = 4-3/4"
- 578 = 5-7/8"

COL.11: FRAME THROAT

- 200 = 2"
- 334 = 3-3/4"
- 478 = 4-7/8"

COL.12: STRIKE

- S = ANSI A115.1 & 2 (4-7/8")
- C = CYLINDRICAL A115.2/(3) (2-3/4")
- D = DOUBLE DOOR
- P = PLAIN (NO PREP)

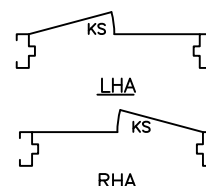
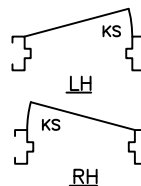
COL.13: LABEL

FIRE PROTECTION

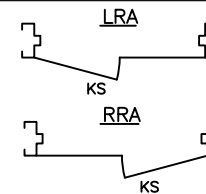
RATING	AGENCY
A = 3 HR	U = UNDERWRITERS LABORATORY
B = 1-1/2 HR	F = FACTORY MUTUAL
C = 3/4 HR	W = WARNOCK HERSEY
O = 1 HR	
T = 1/3 HR	

COL.14: FRAME TYPE

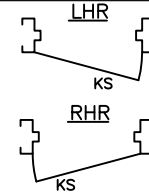
- BL = BORROWED LITE
- SL = SIDELITE
- TF = TRANSOM
- DF = DUTCH
- DA = DOUBLE ACTING
- CM = COMMUNICATING



INSIDE



OUTSIDE



COL.15 ANCHORS

- WMA = WIRE MASONRY ANCHOR
- WS = WOOD STUD
- MS = METAL STUD
- SA = FLOOR
- EO = EXISTING OPENING
- MT = MASONRY TEE
- YS = YOKE & STRAP

See anchor sheet for more

COL.16: FRAME ELEVATION

DOOR DATA

COL.17: DOOR SERIES AND CORE

- RI = REGENT (IMPREGNATED HONEYCOMB CORE, HANDED)
- RN = REGENT (NON-IMPREGNATED HONEYCOMB CORE, HANDED)
- OI = OMEGA (IMPREGNATED HONEYCOMB CORE, NON-HANDED)
- LP = LEGION (POLYSTYRENE CORE, HANDED)
- UP = ULTRA (POLYSTYRENE CORE, NON-HANDED)
- IU = IMPERIAL (POLYURETHANE FOAM CORE, HANDED)
- VU = VERSADOOR (POLYURETHANE FOAM CORE, NON-HANDED)
- FT = FUEGO (250° TEMP. RISE CORE, HANDED)
- OT = OMEGA DOOR W/250° TEMP. RISE CORE, NON-HANDED)
- TX = THRULITE (STILE & RAIL DESIGN, HANDED)
- HF = TRIO (VERTICALLY STIFFENED, LAMINATED CORE W/FIBERGLASS, HANDED)
- HE = TRIO-E (VERTICALLY STIFFENED, ENERGY EFFICIENT CORE W/POLYURETHANE, HANDED)
- HT = TRIO (VERTICALLY STIFFENED, LAMINATED 450°F TEMP. RISE CORE W/FIBERGLASS, HANDED)
- MS = MEDALLION (VERTICALLY STIFFENED CORE, HANDED)
- AP = ARMORSHIELD (LEVEL III, BULLET RESISTANT POLYSTYRENE CORE, HANDED)
- AS = ARMORSHIELD (LEVEL III, BULLET RESISTANT STEEL-STIFFENED CORE, HANDED)
- AI = ARMORSHIELD (LEVEL III, BULLET RESISTANT HONEYCOMB CORE, HANDED)
- A4 = ARMORSHIELD (LEVEL IV, BULLET RESISTANT CORE, HANDED)
- MJ = MEDALLION (VERTICALLY STIFFENED CORE, MARINE TECH, HANDED)
- STX = SOUND-TECH XPRESS (ACOUSTICAL CORE, HANDED)
- SP = STORMPRO TORNADO RESISTANT, (FEMA/ICC500)
- WRD = WATER RESISTANT DOOR, POLYSTYRENE CORE, HANDED
- BH-MS = BEHAVIORAL HEALTHCARE PATIENT ROOM ACCESS SS CORE, HANDED
- BH-RI = BEHAVIORAL HEALTHCARE PATIENT ROOM ACCESS HYC, HANDED

COL.18: GAGE, MATERIAL AND FINISH

- _CRS = _GA. COLD ROLLED STEEL
- _A60 = _GA. GALVANNEAL STEEL
- _G90 = _GA. G90 GALVANIZED STEEL
- _M40 = _GA GALVANNEAL STEEL, MADERA
- _S01 = _GA. STAINLESS STEEL 304-4
- _S02 = _GA. STAINLESS STEEL 316-4
- _S05 = _GA. STAINLESS STEEL 304-8
- _S06 = _GA. STAINLESS STEEL 316-8

"_" represents steel gage (12,14,16,18,20)

Common codes shown; additional gages, material and finishes available.

COL.19: DESIGN

- F = FLUSH
- G = HALF GLASS
- G3 = HALF GLASS W/3 LITES
- FG = FULL GLASS
- N425 = 4 x 25 NARROW LITE
- V = 10 x 10 VISION LITE

EMBOSSED PANEL DESIGNS

- E601 = 6 PANEL
 - E801 = 8 PANEL
 - EC05 = CROSSBUCK W/9 LITES
 - E101 = 1 PANEL
 - E201 = 2 PANEL
 - E202 = 2 PANEL ARCHD TOP
 - E203 = 2P ARCHD TOP W/ PLANKS
- See door elevation sheet for more

COL.20: LOCK PREP

- LC1 = CYLINDRICAL (Gov. 160/161)
- LM2 = MORTISE w/Function Holes
- LM0 = BLANK (MORTISE)
- PM2 = MORTISE EXIT DEVICE
- PR3 = RIM EXIT DEVICE
- PV8 = SURF. VERT. ROD EXIT DEVICE
- PV9 = CONC. VERT. ROD EXIT DEVICE
- LPO = PLAIN (NO LOCK PREP)

COL.21: LABEL

(SEE COL. 13 FOR LABEL CODES)

COL.23: REMARKS

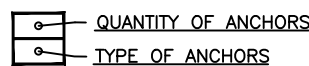
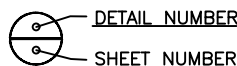
- ASTRAGALS, LOUVER, VISION LITE
See Door Accessories sheet
- P___ = COLORSTYLE OR SPECIAL FINISH
(NOTE FINISH CODE)
- CS___ = MADERA STAIN FINISH
(NOTE FINISH CODE)

DOOR & FRAME SCHEDULE LEGEND

(FOR USE WITH SCHEDULE SHEET)

SYMBOLS

N.B.C. = NOT BY CECO N.I.C. = NOT IN CONTRACT



Ceco Door (Conversion: 1" = 25.4 mm, e.g., 1-3/4" = 44.45 mm)

ASSA ABLOY

DRAWN BY _____	DATE _____			
CHK'D BY _____	DATE _____			
SHT _____	CONTRACT NO. _____	ISSUE DATE _____	REVISIONS _____	BY _____
OF _____				