

SERIES DC, CASED OPENING, SLIP-ON DRYWALL FRAME INSTALLATION INSTRUCTIONS

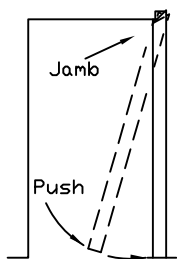
(DOES NOT APPLY TO DRYWALL FRAMES WITH INTEGRAL DOOR STOPS)
TO DETERMINE ROUGH OPENING:

ADD 2-3/4" TO DOOR OPENING WIDTH

ADD 1" TO DOOR OPENING HEIGHT

e.g., For a 3068 door opening when frame components have a 2" face, the rough opening is 38-3/4" x 81"

STEP 1



PROCEDURE:

STEP 1

- A. Begin installation by pushing the top of one jamb over the wall.
- B. Hold the top in place then push the bottom in towards and over the wall.

STEP 2

- A. Position frame head over the wall.
- B. Align head tabs with jamb slots then slide head towards jamb and engage tabs in slots.

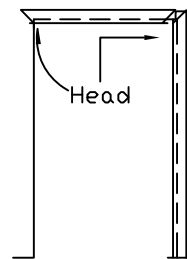
STEP 3

- A. Push the top of the remaining jamb over wall and mate jamb slots and head tabs.
- B. Push the bottom of this jamb in towards and over the wall.
- C. Level the head.

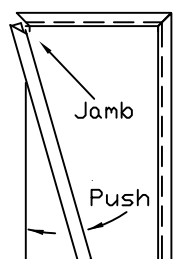
STEP 4

- A. Insert screw driver into top plumb anchor screws. Alternately adjust top plumb anchors until they bear firmly against studs.
- B. Plumb hinge jamb and fasten at sill. **PLUMB**
- C. Place a temporary wood spreader between jambs at sill. Adjust strike jamb to fit firmly against spreader and fasten at bottom of this jamb.*
- D. Adjust intermediate plumb anchors (if present) until they too bear firmly against studs

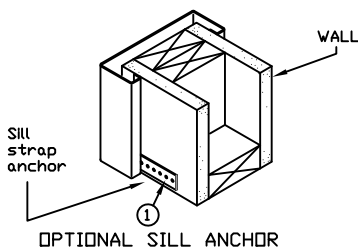
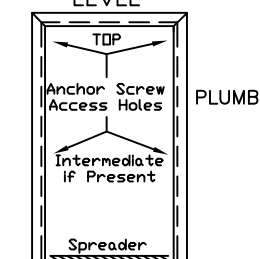
STEP 2



STEP 3



**STEP 4
LEVEL**



** Some installers prefer to hang door and fit frame to door prior to anchoring at sill.*

① Insert fasteners (not included) and fix jamb to wall framing

