

SERIES DRW, SLIP-ON DRYWALL SINGLE RABBET FRAME INSTALLATION INSTRUCTIONS

TO DETERMINE ROUGH OPENING OF DRYWALL SINGLE RABBET WEATHERKERF FRAMES WITH 4-3/8" DEPTH OR LESS, ADD 2-3/4" TO DOOR OPENING WIDTH AND 1" TO DOOR OPENING HEIGHT.

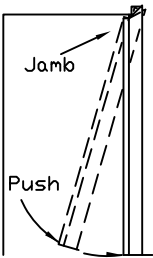
EXAMPLE: 3'0" X 6'8" DOOR OPENING, THE ROUGH OPENING IS 38-3/4" X 81".

TO DETERMINE ROUGH OPENING OF DRYWALL SINGLE RABBET WEATHERKERF FRAMES WITH 4-1/2" DEPTH OR MORE, ADD 2" TO DOOR OPENING WIDTH AND 1" TO DOOR OPENING HEIGHT.

EXAMPLE: 3'0" X 6'8" DOOR OPENING, THE ROUGH OPENING IS 38" X 81".

PROCEDURE

STEP 1



STEP 1

- A. Begin installation by pushing the top of one jamb over the wall.
- B. Hold the top in place then push the bottom in towards and over the wall.

STEP 2

- A. Position frame head over the wall.
- B. Align head tabs with jamb slots then slide head towards jamb and engage tabs in slots.

STEP 3

- A. Push the top of the remaining jamb over wall and mate jamb slots and head tabs.
- B. Push the bottom of this jamb in towards and over the wall.
- C. Level the head.

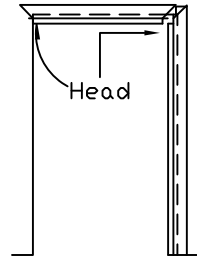
STEP 4

- A. Insert screw driver into top plumb anchor screws. Alternately adjust top plumb anchors until they bear firmly against studs.

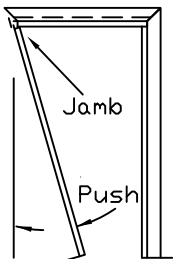
Note: Step B. below is required for labeled frames

- B. Insert (4) #8 x 1/2" MIN. (Phil) PHSMS through holes in PLUMB head backbends and fasten to jamb mite guides (by others).
- C. Verify that head is still level, and shim under jambs only if necessary.
- D. Plumb hinge jamb and fasten at sill.*
- E. Place a temporary wood spreader between jambs at sill. Adjust strike jamb to fit firmly against spreader and fasten at bottom of this jamb.*
- F. Adjust intermediate plumb anchors (if present) until they too bear firmly against studs.
- G. Install mutes in holes provided in strike jamb, or head if double door opening.

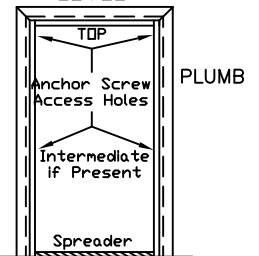
STEP 2



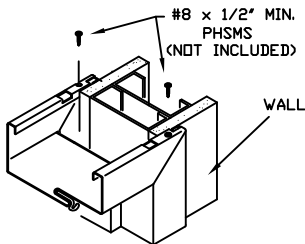
STEP 3



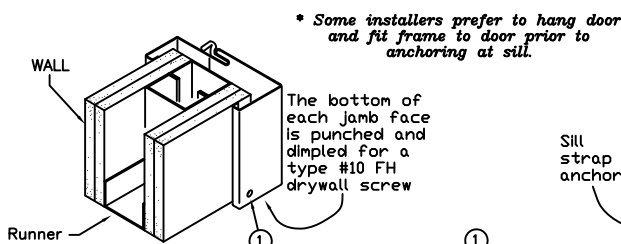
STEP 4 LEVEL



Wood spreader must be square and at least 1" thick. Length of spreader equals door opening width. Spreader must be nearly as wide as frame depth. Notch around frame stop.



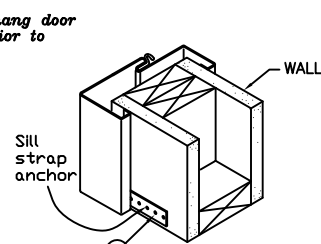
FASTENERS AT HEAD
(Required on all labeled frames)



STANDARD SILL ANCHOR

* Some installers prefer to hang door and fit frame to door prior to anchoring at sill.

The bottom of each jamb face is punched and dimpled for a type #10 FH drywall screw



OPTIONAL SILL ANCHOR

① Insert fasteners (not included) and fix jamb to wall framing