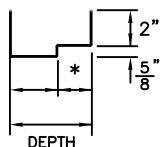


DRYWALL SERIES

DRB (for 1-3/4" DOOR)

PROFILE

DRB



18 GA 16 GA 14 GA

FIRE RATINGS

20 MINUTE
45 MINUTE
1-1/2 HOUR

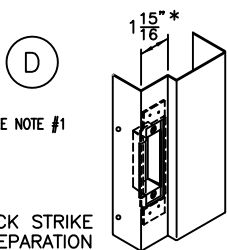
LABELING AGENCIES

UL LLC
Warnock Hersey

FIRE TESTS

UL10B, UL10C,
NFPA252 & UL1784

Cold rolled steel is standard.
Galvanized and galvanized steel are optional.

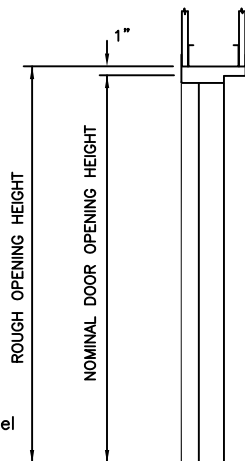


SEE NOTE #1

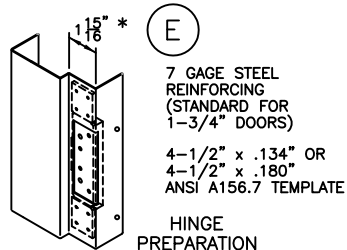
LOCK STRIKE PREPARATION

UNIVERSAL (4-7/8") (shown)
ANSI A115.1 & 2 TEMPLATE
12 GAGE STEEL REINFORCING
(STANDARD FOR 1-3/4" DOORS)

CYLINDRICAL (2-3/4") (not shown)
ANSI A115.3 TEMPLATE
16 GAGE STEEL REINFORCING
OPTIONAL FOR 1-3/4" DOORS)

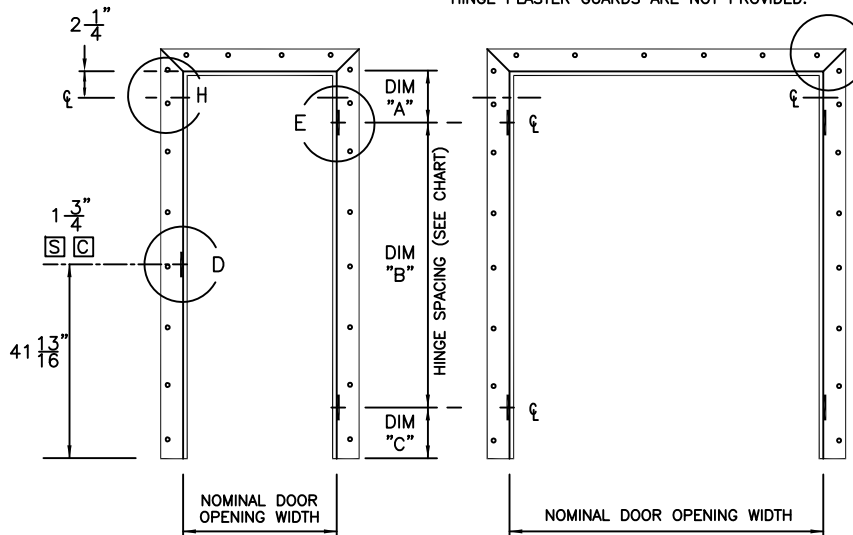


VERTICAL SECTION



HINGE PREPARATION

BACKSET: 5/16"



SINGLE SWING ELEVATION

DOUBLE SWING ELEVATION

GAUGE OF STEEL	THROAT OPENINGS		20 MINUTE RATING		3/4 HOUR RATING		1-1/2 HOUR RATING	
	MIN.	MAX.	MAX. SINGLE	MAX. PAIR	MAX. SINGLE	MAX. PAIR	MAX. SINGLE	MAX. PAIR
18	3-1/2"	3-11/16"	4'0"x7'0"	8'0"x7'0"	4'0"x7'0"	8'0"x7'0"	3'0"x7'0"	6'0"x7'0"
	3-3/4"	13"	4'0"x7'0"	8'0"x7'0"	4'0"x7'0"	8'0"x7'0"	4'0"x7'0"	8'0"x7'0"
16 & 14	3-1/2"	3-11/16"	4'0"x9'0"	8'0"x9'0"	4'0"x9'0"	8'0"x9'0"	3'0"x7'0"	6'0"x7'0"
	3-3/4"	13"	4'0"x9'0"	8'0"x9'0"	4'0"x9'0"	8'0"x9'0"	4'0"x9'0"	8'0"x9'0"

HINGE SPACING

OPENING HEIGHT	6'8"			7'0"			7'2"			7'10"			8'0"			9'0"		
	A	B	C	A	B	C	A	B	C	A	B	C	A	B	C	A	B	C
1 3/4" STANDARD	9"	(2) AT 31"	9"	9"	(2) AT 33"	9"	9"	(2) AT 34"	9"	9"	(3) AT 25.33"	9"	9"	(3) AT 26"	9"	9"	(3) AT 30"	9"

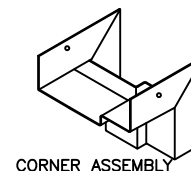
NOTE #1:
STRIKE PLASTER GUARDS (SNAP-IN TYPE) ARE OPTIONAL.

5/8" DEEP 1" DEEP

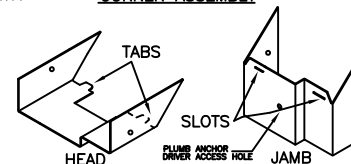
WALL STUDS MAY HAVE TO BE NOTCHED TO PROVIDE CLEARANCE FOR THE ONE INCH TYPE.
IF REQUIRED, PLASTER GUARDS ARE BEST REMOVED BEFORE FRAME INSTALLATION.
HINGE PLASTER GUARDS ARE NOT PROVIDED.

F

KNOCKED DOWN

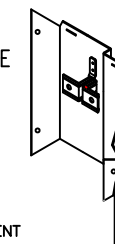


CORNER ASSEMBLY



H

ADJUSTABLE PLUMB ANCHOR



ONE EACH JAMB
Adjust with screw driver

FOR 4" DEPTH & LESS, PLUMB ANCHOR SHALL BE PLACED IN RABBET.

DEPTH	DIM. "R"
3"-4"	1-3/8"
OVER 4"	1"

DRYWALL TYPE FRAME WITH NO RETURNS OR MITER GUIDES. FRAME HAS ONE STANDARD PLUMB ANCHOR PER JAMB UP TO & INCLUDING 7'2" HEIGHT WITH AN ADDITIONAL PLUMB ANCHOR ON HEIGHTS OVER 7'2" WHEN FIRE RATED, PLUS ATTACHMENT HOLES PUNCHED IN EACH FACE. ATTACHMENT HOLES TO BE LOCATED AT 2" MAXIMUM FROM EACH END & 16" ON CENTER MAXIMUM & APPROXIMATELY 1/2" IN FROM THE THROAT OF THE FRAME.

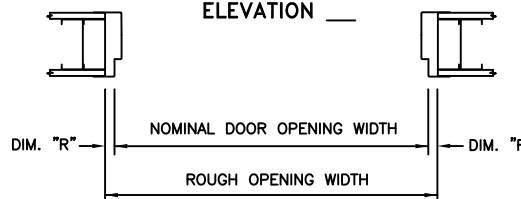
OPTION: IN LIEU OF THE PLUMB ANCHOR, THE ATTACHMENT HOLES WILL BE SPACED AT 2" MAXIMUM FROM EACH END AND 12" ON CENTER MAXIMUM.

FACE HOLE FASTENERS ARE BY CONTRACTOR AND MUST BE LONG ENOUGH TO ENGAGE STUD.

FACE HOLE DIAMETER:

- 0.190"
- 9/32"
- 5/16"

HORIZONTAL SECTION



(Conversion: 1" = 25.4 mm,
e.g., 1-3/4" = 44.45 mm)



DRAWN BY _____	DATE _____			
CHK'D BY _____	DATE _____			
SHT _____	CONTRACT NO. _____	ISSUE DATE _____	REVISIONS _____	BY _____

SERIES DRB DRYWALL NAILER FRAMES

(SLIP-ON DRYWALL FRAMES)

(FIRE DOOR FRAMES MUST COMPLY WITH PROCEDURES OF LABELING AGENCY)

FOR HAND & SWING

SEE DOOR SCHEDULE

