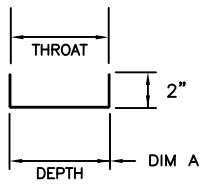
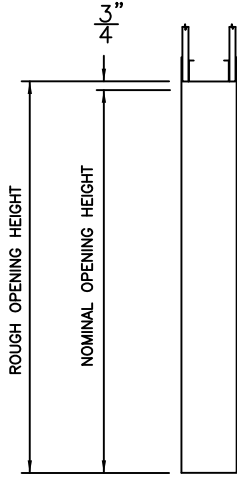


SERIES/PROFILE

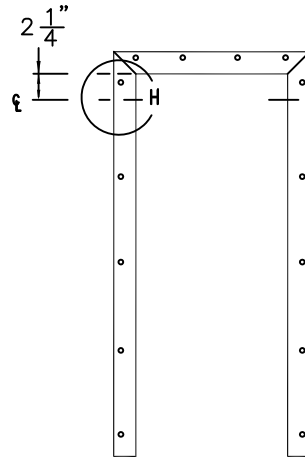
DCB



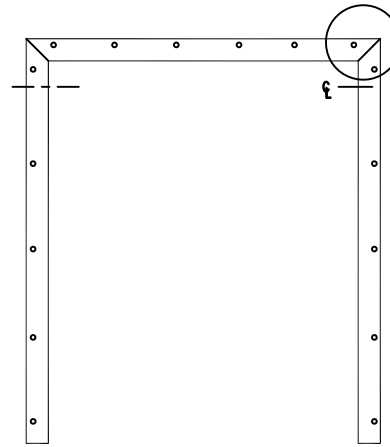
- 18 GA
- 16 GA
- 14 GA



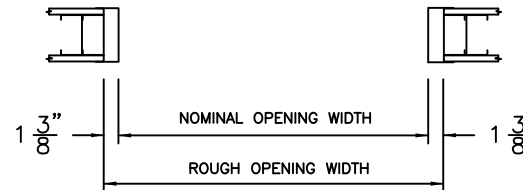
VERTICAL SECTION



SINGLE OPENING ELEVATION

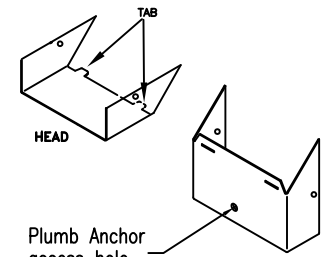


DOUBLE OPENING ELEVATION



HORIZONTAL SECTION

F

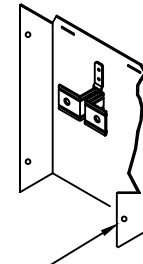


KNOCKED DOWN

Plumb Anchor access hole with screw.

H

ADJUSTABLE PLUMB ANCHOR



ONE EACH JAMB
Adjust with screw driver

FASTENER ATTACHMENT HOLES PUNCHED IN EACH FACE OF JAMBS AND FRAME HEAD.

- FACE HOLE DIAMETER:**
- 0.190"
 - 9/32"
 - 5/16"

FACE HOLE FASTENERS ARE BY CONTRACTOR AND MUST BE LONG ENOUGH TO ENGAGE STUD.

DRYWALL TYPE FRAME WITH NO RETURNS OR MITER GUIDES. FRAME HAS ONE STANDARD PLUMB ANCHOR PER JAMB UP TO & INCLUDING 7'2" HEIGHT WITH AN ADDITIONAL PLUMB ANCHOR ON HEIGHTS OVER 7'2" WHEN FIRE RATED, PLUS ATTACHMENT HOLES PUNCHED IN EACH FACE. ATTACHMENT HOLES TO BE LOCATED AT 2" MAXIMUM FROM EACH END & 16" ON CENTER MAXIMUM & APPROXIMATELY 1/2" IN FROM THE THROAT OF THE FRAME.

OPTION: IN LIEU OF THE PLUMB ANCHOR, THE ATTACHMENT HOLES WILL BE SPACED AT 2" MAXIMUM FROM EACH END AND 12" ON CENTER MAXIMUM.

Series DCB Depths

| | |
|-------|-------------|
| DIM A | 3" THRU 14" |
|-------|-------------|

Cold rolled steel is standard.
Galvannealed and galvanized steel are optional.

CecoDoor (Conversion: 1" = 25.4 mm, e.g., 1-3/4" = 44.45 mm)

ASSA ABLOY

| | | | | |
|--------------------|--------------------|------------------|-----------------|----------|
| DRAWN BY _____ | DATE _____ | | | |
| CHK'D BY _____ | DATE _____ | | | |
| SHT _____ OF _____ | CONTRACT NO. _____ | ISSUE DATE _____ | REVISIONS _____ | BY _____ |

SERIES DCB CASED OPENING FRAMES
(SLIP-ON DRYWALL FRAMES)

FURNISHED WITH ONE COAT OF NUETRAL COLOR PRIMER PAINT.
PRIME PAINT HAS BEEN TESTED IN CONFORMANCE WITH ANSI A250.10.

Experience a safer
and more open world