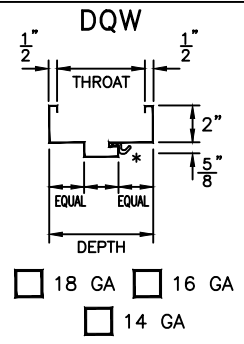


**KERFED SERIES
DRYWALL FRAMES
FOR 1-3/4" DOORS**

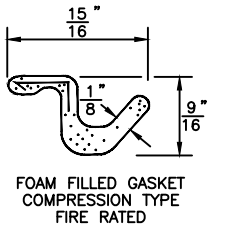
PROFILES

**DOUBLE
RABBET**

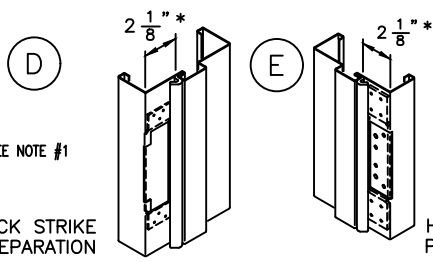


Cold rolled steel is standard. Galvannealed & galvanized is optional.

GASKET



NOTE: Gasket ships loose when frame is prime painted. Do not install gasket until frame has been finish painted.



SEE NOTE #1

LOCK STRIKE PREPARATION

HINGE PREPARATION

- UNIVERSAL (4-7/8") (shown)
ANSI A115.1 & 2 TEMPLATE
12 GAGE STEEL REINFORCING STANDARD
- CYLINDRICAL (2-3/4") (not shown)
ANSI A115.3 TEMPLATE
16 GAGE STEEL REINFORCING OPTIONAL

4-1/2" x .134" OR
4-1/2" x .180"
ANSI A156.7 TEMPLATE
7 GAGE STEEL REINFORCING

OPENING HEIGHT	6'-8"			7'-0"			7'-2"			7'-10"			8'-0"			9'-0"		
	A	B	C	A	B	C	A	B	C	A	B	C	A	B	C	A	B	C
1-3/4" STANDARD	9"	(2) AT 31"	9"	9"	(2) AT 33"	9"	9"	(2) AT 34"	9"	9"	(3) AT 25.33"	9"	9"	(3) AT 26"	9"	9"	(3) AT 30"	9"

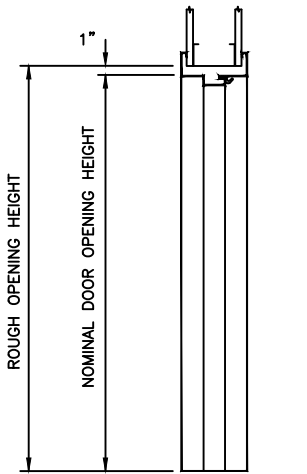
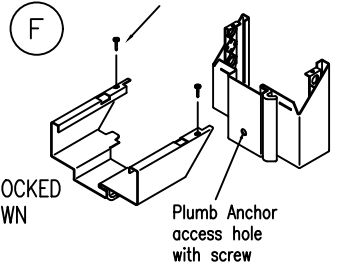
The maximum size for 18 gage material is 4'0"x7'0" (single) and 6'10"x7'0" (pair). For larger sizes and/or heavy doors, use 16 or 14 gage steel.

NOTE: PLASTER GUARDS

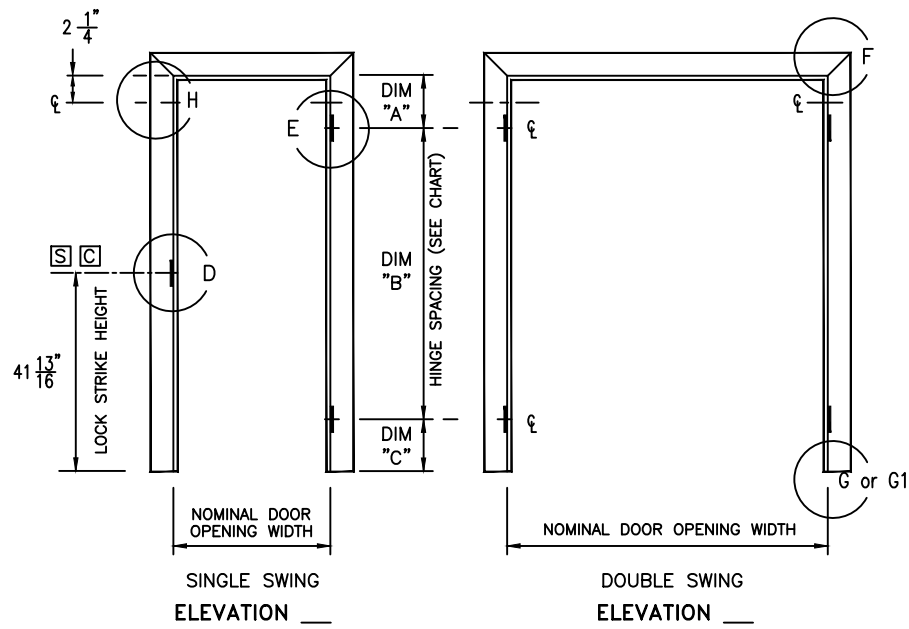
STRIKE PLASTER GUARDS (SNAP-IN TYPE) ARE OPTIONAL.
 1" DEEP

- STEEL/WOOD STUD AND DRYWALL CONSTRUCTION METHODS, IN CONJUNCTION WITH FRAME ANCHORAGE, COULD RESULT IN INTERFERENCE BETWEEN THE STUD AND HARDWARE PREP. NOTCHING OF THE STUD COULD RESULT IN COMPROMISING THE STABILITY OF THE FRAME. CONSIDERATION SHOULD BE GIVEN TO SPECIFYING THE HARDWARE SUITABLY SIZED TO FIT THE CONFINES OF A STANDARD FRAME OR SPECIFYING ALTERNATE FRAME PROFILES TO ACCOMMODATE THE HARDWARE.
- IF NECESSARY TO REMOVE, PLASTER GUARDS ARE BEST REMOVED BEFORE FRAME INSTALLATION.

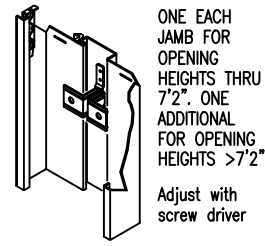
#8 x 1/2" PAN HEAD SMS (RECOMMENDED IF NON-FIRE RATED) (REQUIRED IF FIRE RATED) (BY OTHERS)



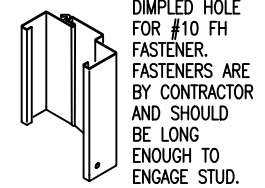
VERTICAL SECTION



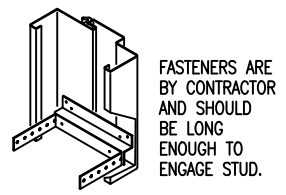
(H) ADJUSTABLE PLUMB ANCHOR



(G) STANDARD SILL ANCHOR

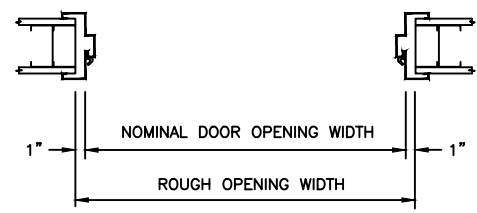


(G1) OPTIONAL SILL STRAP ANCHOR



LABELING AGENCIES
UL LLC
Warnock Hersey
Factory Mutual

TEST STANDARDS
NFPA 252, UL10B, UL10C & UL1784



HORIZONTAL SECTION

CecoDoor (Conversion: 1" = 25.4 mm, e.g., 1-3/4" = 44.45 mm)

ASSA ABLOY

DRAWN BY _____	DATE _____			
CHK'D BY _____	DATE _____			
SHT _____	CONTRACT NO. _____	ISSUE DATE _____	REVISIONS _____	BY _____

**SERIES DQW
GASKETED DRYWALL FRAMES
SLIP-ON DRYWALL FRAMES FOR 1-3/4" THICK DOORS**

FOR HAND & SWING
SEE DOOR SCHEDULE

Experience a safer and more open world