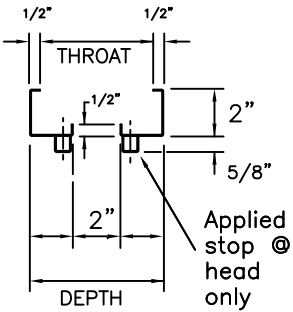


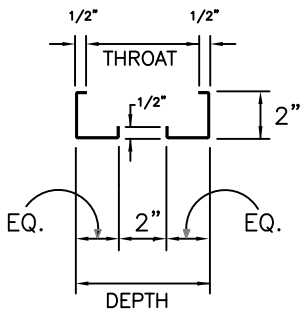
- 16 GAGE COLD ROLLED STEEL
- 16 GAGE GALVANNEALED STEEL
- PRIME PAINTED

PROFILES

POCKET SLIDE FRAME

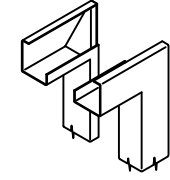
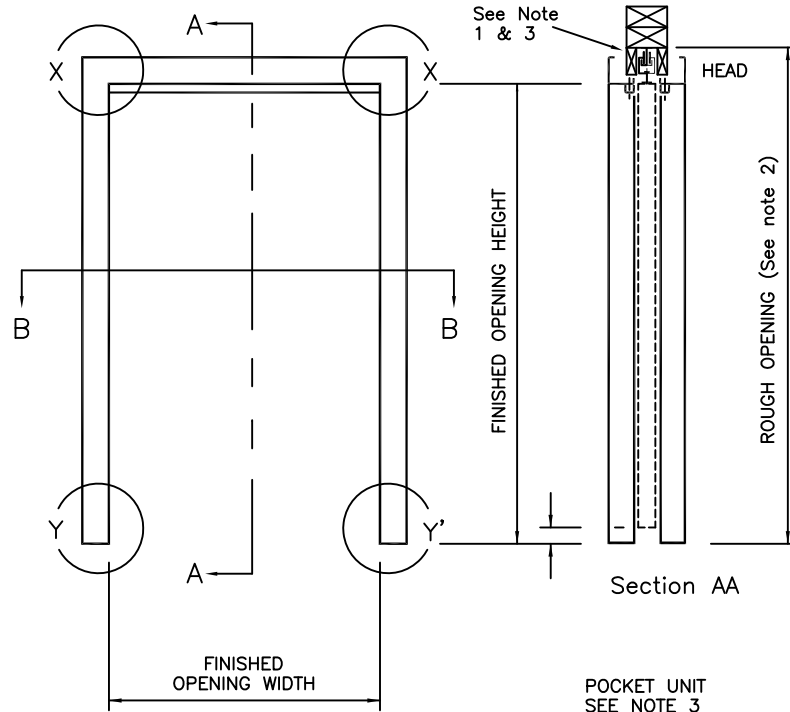


(Head)



(Split Jamb)

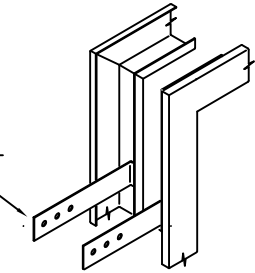
FINISHED OPENING IS 1-1/2" LESS THAN NOMINAL WIDTH AND EQUAL TO NOMINAL HEIGHT.
E.G., FOR A 6'0"x7'0" NOMINAL SIZE, THE FINISHED OPENING SIZE WOULD BE 70-1/2" x 84".



CORNERS ARE K.D. OR MITERED AND WELDED

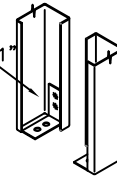


STEEL/WOOD STUD STRAP-ANCHOR, (3) PAIR PER JAMB, WELDED

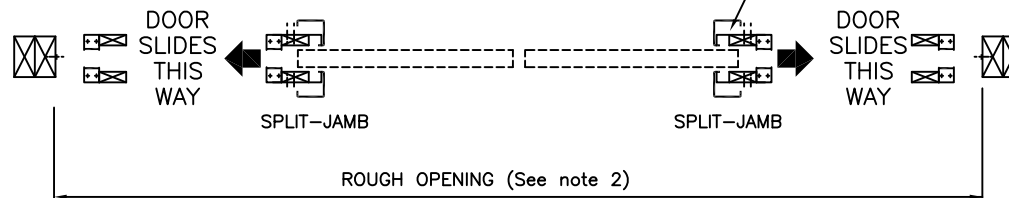


JAMB ANCHOR

16 GA x 1 1/2" x 1-1/2" x 1" steel angle welded 2 places



SILL ANCHOR



Section BB

FINISH OPENING

NOMINAL SIZES (Feet & Inches)	
WIDTHS	4'0", 4'6", 5'0", 5'6", 6'0", 6'6", 7'0", 7'6", 8'0"
HEIGHTS	6'8", 7'0", 7'2", 8'0"

Cold rolled steel is standard. Galvanneal and galvanized steel are optional.

- NOTES:**
1. Track and hardware are by others.
 2. For ROUGH OPENING SIZE, see pocket hardware instructions.
 3. Pocket-unit, nailers, and rough-in wall framing are by others.
 4. Door frame should be installed before wall framing is erected.

CecoDoor (Conversion: 1" = 25.4 mm, e.g., 1-3/4" = 44.45 mm)

ASSA ABLOY

DRAWN BY _____	DATE _____		
CHK'D BY _____	DATE _____		
SHT _____ OF _____	CONTRACT NO. _____	ISSUE DATE _____	REVISIONS _____ BY _____

POCKET SLIDE FRAME
for 1-3/4" thick door