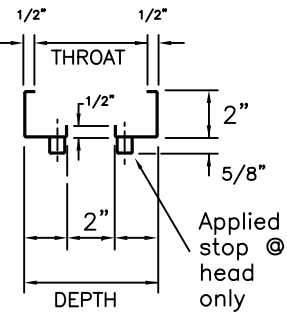
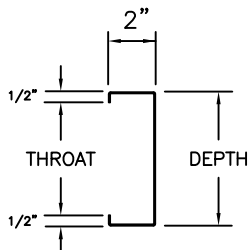


- 16 GAGE COLD ROLLED STEEL
- 16 GAGE GALVANNEALED STEEL
- PRIME PAINTED

**PROFILES**



**TYPE ① PROFILE**  
(Head & Split-Jamb)



**TYPE ② PROFILE**  
(Strike-Jamb)

**NOTES:**

1. Track and hardware are by others.
2. For ROUGH OPENING SIZE, see pocket hardware instructions.
3. Pocket-unit, nailers, and rough-in wall framing are by others.
4. Door frame should be installed before wall framing is erected.
5. To reverse direction in which door slides, flip-flop frame.

**CecoDoor** (Conversion: 1" = 25.4 mm, e.g., 1-3/4" = 44.45 mm)

**ASSA ABLOY**

DRAWN BY \_\_\_\_\_ DATE \_\_\_\_\_  
CHK'D BY \_\_\_\_\_ DATE \_\_\_\_\_

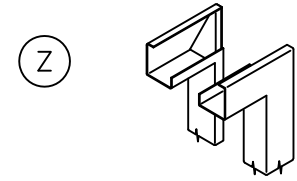
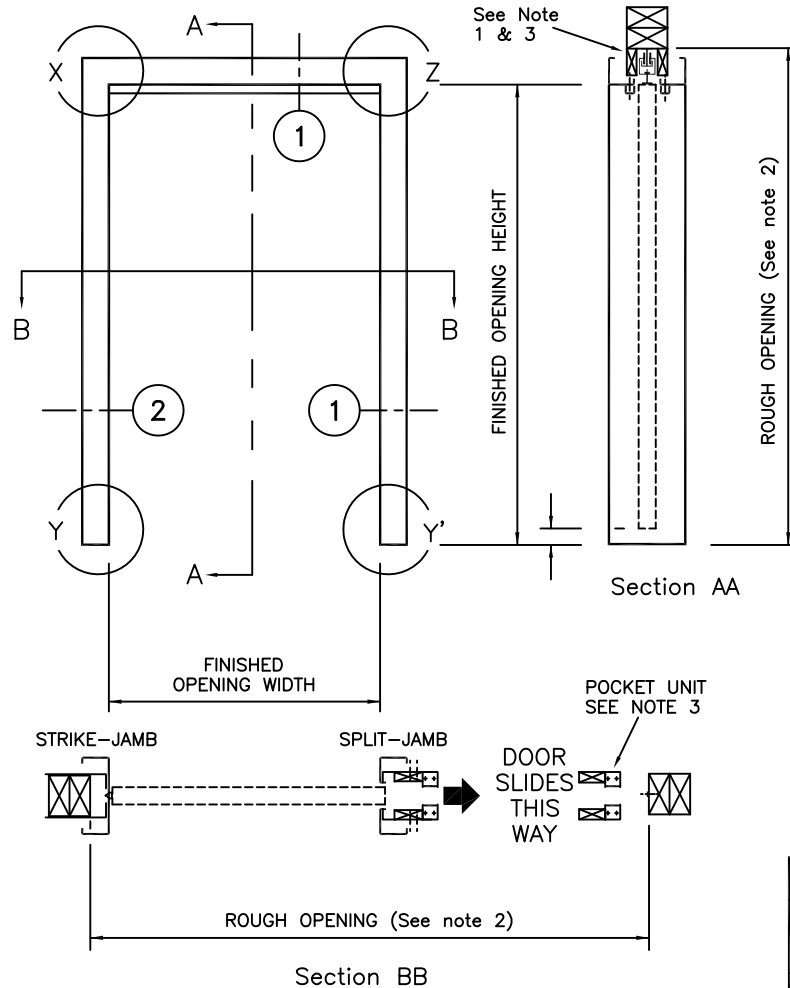
SHT \_\_\_\_\_ CONTRACT NO. \_\_\_\_\_  
OF \_\_\_\_\_

ISSUE DATE

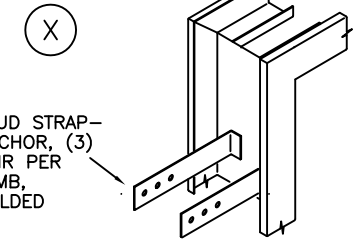
REVISIONS

BY

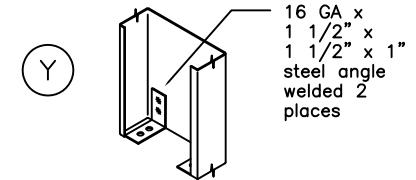
FINISHED OPENING IS 1-1/2" LESS THAN NOMINAL WIDTH AND EQUAL TO NOMINAL HEIGHT.  
E.G., FOR A 3'0"x7'0" NOMINAL SIZE, THE FINISHED OPENING SIZE WOULD BE 34-1/2" x 84".



CORNERS ARE K.D. OR MITERED AND WELDED



STUD STRAP-ANCHOR, (3) PAIR PER JAMB, WELDED



SILL ANCHOR (Y' AT SPLIT-JAMB SIMILAR)

**FINISH OPENING**

NOMINAL SIZES (Feet & Inches)	
WIDTHS	2'0", 2'4", 2'6", 2'8", 2'10" 3'0", 3'4", 3'6", 3'8", 3'10", 4'0"
HEIGHTS	6'8", 7'0", 7'2"

Cold rolled steel is standard.  
Galvannealed and galvanized steel are optional.

**POCKET SLIDE FRAME**  
for 1-3/4" thick door