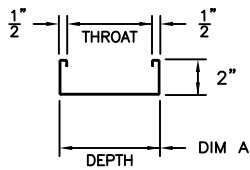
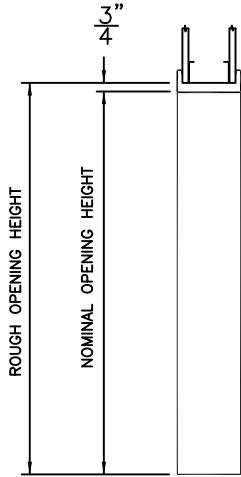


SERIES/PROFILE

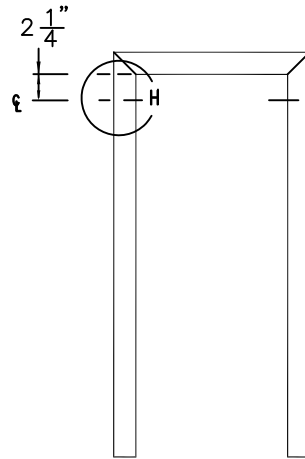
DC



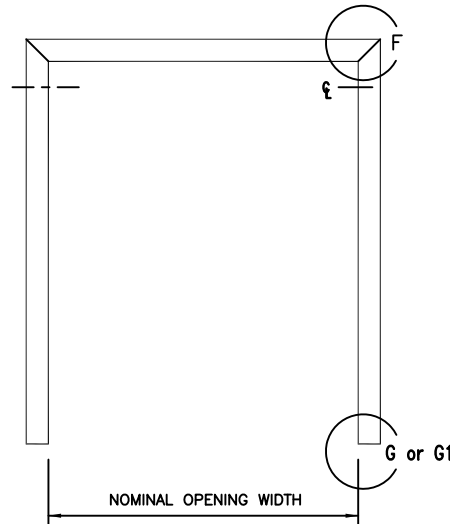
- 18 GA 16 GA
- 14 GA



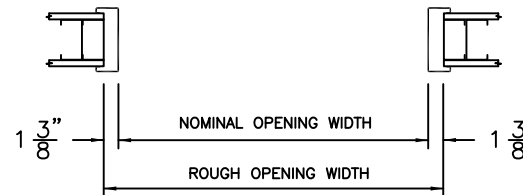
VERTICAL SECTION



SINGLE OPENING ELEVATION



DOUBLE OPENING ELEVATION



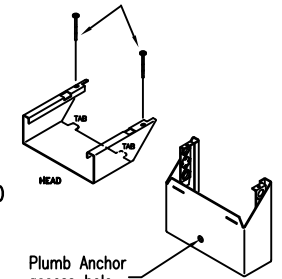
HORIZONTAL SECTION

Series DC Depths	
DIM A	3" THRU 14"

Cold rolled steel is standard.
Galvanized and galvanized steel are optional.

#8x1/2" PAN HEAD SMS
(RECOMMENDED, BY CONTRACTOR)

(F)

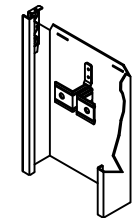


KNOCKED DOWN

Plumb Anchor access hole with screw.

(H)

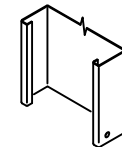
ADJUSTABLE PLUMB ANCHOR



ONE EACH JAMB FOR OPENING HEIGHTS THRU 7'2". ONE ADDITIONAL FOR OPENING HEIGHTS >7'2"
Adjust with screw driver

(G)

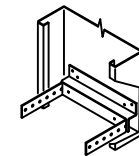
STANDARD SILL ANCHOR



DIMPLED HOLE FOR #10 FH FASTENER.
FASTENERS ARE BY CONTRACTOR AND SHOULD BE LONG ENOUGH TO ENGAGE STUD.

(G1)

OPTIONAL SILL STRAP ANCHOR



FASTENERS ARE BY CONTRACTOR AND SHOULD BE LONG ENOUGH TO ENGAGE STUD.

CecoDoor (Conversion: 1" = 25.4 mm, e.g., 1-3/4" = 44.45 mm)

ASSA ABLOY

DRAWN BY _____	DATE _____			
CHK'D BY _____	DATE _____			
SHT _____ OF _____	CONTRACT NO. _____	ISSUE DATE _____	REVISIONS _____	BY _____

SERIES DC CASED OPENING FRAMES
(SLIP-ON DRYWALL FRAMES)

FURNISHED WITH ONE COAT OF NEUTRAL COLOR PRIMER PAINT.
PRIME PAINT HAS BEEN TESTED IN CONFORMANCE WITH ANSI A250.10.