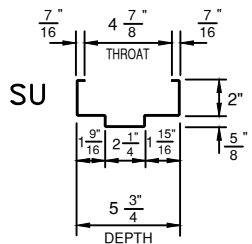


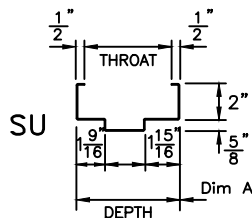
SERIES

- SU (for 1-3/4" DOOR)
- SQ (for 1-3/4" DOOR)
- SR (for 1-3/4" DOOR)

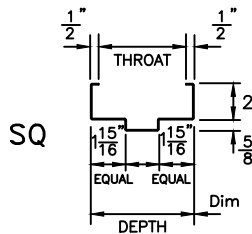
PROFILES



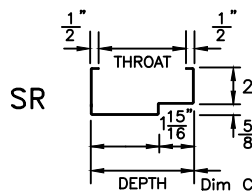
18 GA 16 GA 14 GA



18 GA 16 GA 14 GA



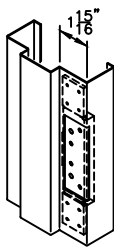
18 GA 16 GA 14 GA



18 GA 16 GA 14 GA

LOCK STRIKE PREPARATION

- UNIVERSAL (4-7/8") (shown)
ANSI A115.1 & 2 TEMPLATE
16 GAGE STEEL REINFORCING
WITH EXTRUDED SCREW HOLES
EQUAL TO 14 GAGE (STANDARD)
- CYLINDRICAL (2-3/4") (not shown)
ANSI A115.3 TEMPLATE
16 GAGE STEEL REINFORCING
WITH EXTRUDED SCREW HOLES
EQUAL TO 14 GAGE.
(OPTIONAL FOR 1-3/4" DOORS)



HINGE PREPARATION

BACKSET: 5/16"

4-1/2" x .134" OR
4-1/2" x .180"
ANSI A156.7 TEMPLATE
7 GAGE STEEL
REINFORCING
(STANDARD FOR
1-3/4" DOORS)

SERIES SU DEPTHS (In addition to 5-3/4")	SERIES SQ & SR DEPTHS	
Dim A 4-1/4" thru 17-7/8"	(Dim B)	Double Rabbet: 4-5/8" thru 17-7/8"
	(Dim C)	Single Rabbet: 3" thru 14"

Cold rolled steel is standard.
Galvannealed and galvanized steel are optional.

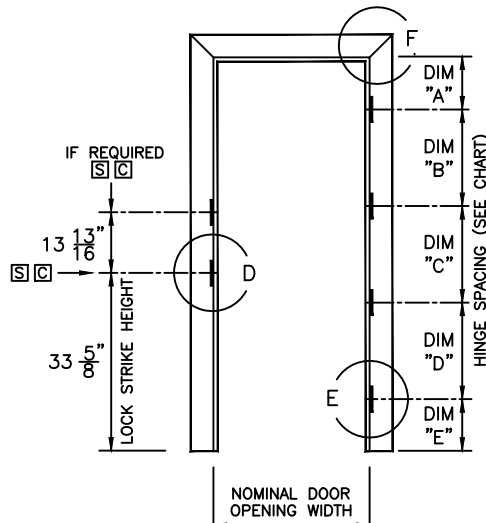
UNLESS OTHERWISE INDICATED, FRAMES ARE FOR 1-3/4" THICK DOORS.

HINGE SPACING

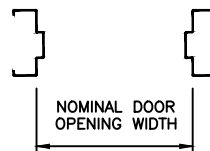
OPENING HEIGHT DOOR THICKNESS	6'8"					7'0"					7'2"					7'10"					8'0"				
	A	B	C	D	E	A	B	C	D	E	A	B	C	D	E	A	B	C	D	E	A	B	C	D	E
1 3/4" STANDARD	9"	22 5/16"	17 3/8"	22 5/16"	9"	9"	26 5/16"	17 3/8"	22 5/16"	9"	9"	28 5/16"	17 3/8"	22 5/16"	9"	9"	36 5/16"	17 3/8"	22 5/16"	9"	9"	38 5/16"	17 3/8"	22 5/16"	9"



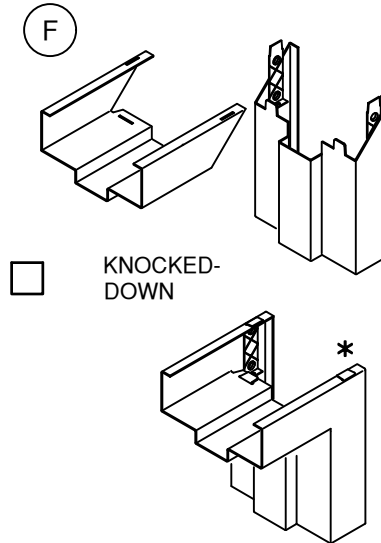
VERTICAL SECTION



SINGLE SWING ELEVATION



HORIZONTAL SECTION



KNOCKED-DOWN

WELDED CORNERS TYPE _____

V2 = FACE WELD ONLY
V3 = FULL FACE & WEB WELD

* Production welded corner types with "V" prefix do not utilize corner tabs.

Frames with welded corners have temporary spreaders tackwelded at sill.

LABELING AGENCIES
UL LLC
Warnock Hersey
Factory Mutual

FIRE TESTS
NFPA 252, UL10B & UL10C

See Tech Data Manual for additional information.

Ceco Door (Conversion: 1" = 25.4 mm, e.g., 1-3/4" = 44.45 mm)

ASSA ABLOY			
DRAWN BY _____	DATE _____		
CHK'D BY _____	DATE _____		
SHT _____	CONTRACT NO. _____	ISSUE DATE _____	REVISIONS _____
OF _____			BY _____

**SERIES SU, SR & SQ
DUTCH DOOR FRAMES**

Furnished with one coat of neutral color primer paint.
Primer paint has been tested in conformance with ANSI A250.10.
(FIRE DOOR FRAMES MUST COMPLY WITH PROCEDURES OF LABELING AGENCY)

FOR HAND & SWING SEE DOOR SCHEDULE	
FOR ANCHORAGE SEE DOOR SCHEDULE & ANCHOR SHEET	