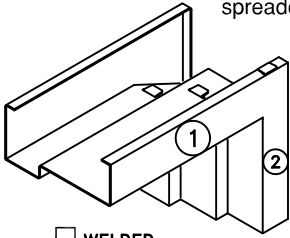
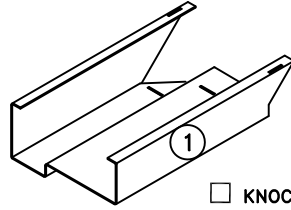


Frames with welded corners have temporary spreaders tackwelded

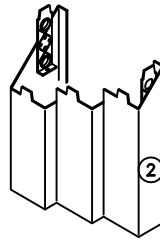


WELDED CORNERS:

TYPE:
V2 OR T2 =
FACE WELD ONLY
V3 OR T3 =
FULL FACE & WEB WELD



KNOCKED DOWN



STANDARD HINGE SPACING

OPENING HEIGHT ▶	6'8"			7'0"			7'2"			7'10"			8'0"			9'0"			10'0"		
DIMENSION ▶	A	B	C	A	B	C	A	B	C	A	B	C	A	B	C	A	B	C	C	D	E
1 3/4" DOOR SPACING ▶	9"	(2) AT 31"	9"	9"	(2) AT 33"	9"	9"	(2) AT 34"	9"	9"	(3) AT 25.33"	9"	9"	(3) AT 26"	9"	9"	(3) AT 30"	9"	9"	(3) AT 34"	9"

Unless otherwise indicated, frames are for 1-3/4" thick doors.
For SI conversion: 1" = 25.4 mm.

STANDARD FRAMES HAVE THE FOLLOWING HINGE PREP QUANTITY:

7'-6" HIGH OR SMALLER: (3) HINGE PREPS HIGHER THAN 7'-6": (4) HINGE PREPS

FIRE LABEL

- UL WH FM NONE

JAMB ANCHORS

- MT WMA MSZ1 MSZ2
 WSZS1 (STUD SIZE _____)
 WSZS2 (STUD SIZE _____)
 YS EO/N EO/PIPE & PLATE

LABELING AGENCIES

UL LLC
Warnock Hersey
Factory Mutual
FIRE TESTS
NFPA 252, UL10B, UL10C
& UL1784

See Tech Data Manual for additional information.

Cold rolled steel is standard.
Galvannealed and galvanized steel are optional.

HINGE PREP

- 4-1/2" x .134" 4-1/2" x 180" 5" x .146" 5" x .190"

HANDING

- LR2 (Shown) STANDARD RR2 (Not shown)

CLOSER REINFORCEMENT

- S1 S2 S3 S4 OTHER

COMMENTS

NOTE: THE NOMINAL DOOR OPENING WIDTH DIMENSION USED FOR ORDERING IS AN ARCHITECTURAL DIMENSION. ACTUAL MANUFACTURING DIMENSION IS 3/16" LESS THAN THE NOMINAL DIMENSION TO ACCOMMODATE CECO STANDARD DOOR LEAF WIDTH SIZES.

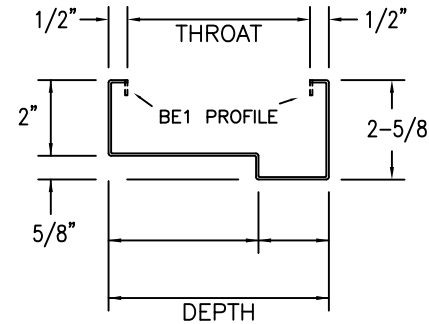
SE1 & BE1 DOUBLE EGRESS FRAME with Type 1 Head (2" Face) and Type 2 Jamb (1-3/8" Face)



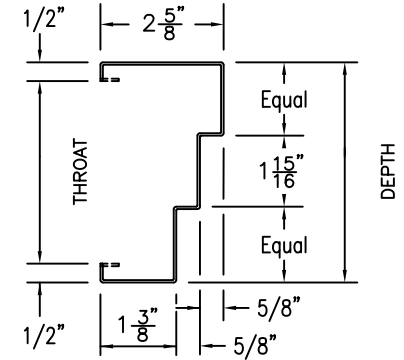
(Conversion: 1" = 25.4 mm, e.g., 1-3/4" = 44.45 mm)

ASSA ABLOY

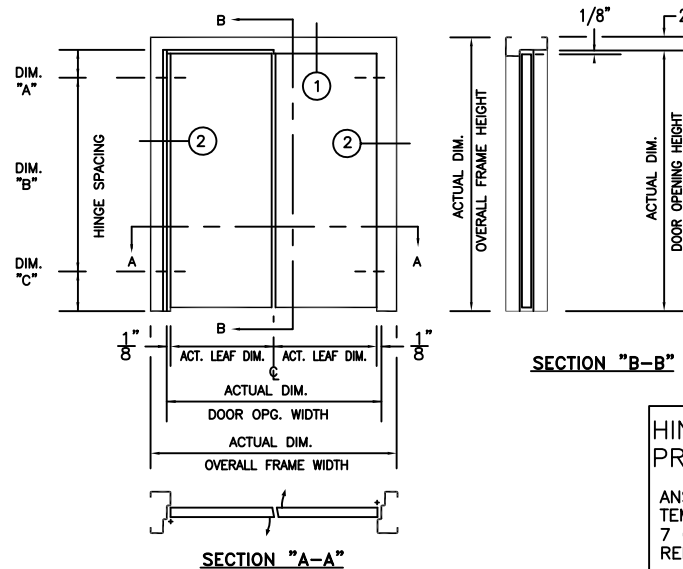
DRAWN BY _____	DATE _____			
CHK'D BY _____	DATE _____			
SHT _____ OF _____	CONTRACT NO. _____	ISSUE DATE _____	REVISIONS _____	BY _____



PROFILE TYPE 1 HEAD



PROFILE TYPE 2 JAMB (1-3/8" FACE)



SECTION "A-A"

SECTION "B-B"

HINGE PREPARATION

ANSI A156.7
TEMPLATE.
7 GAGE STEEL REINFORCEMENT.
PLASTER GUARD IS 26 GAGE STEEL.

BACKSET: 5/16"

