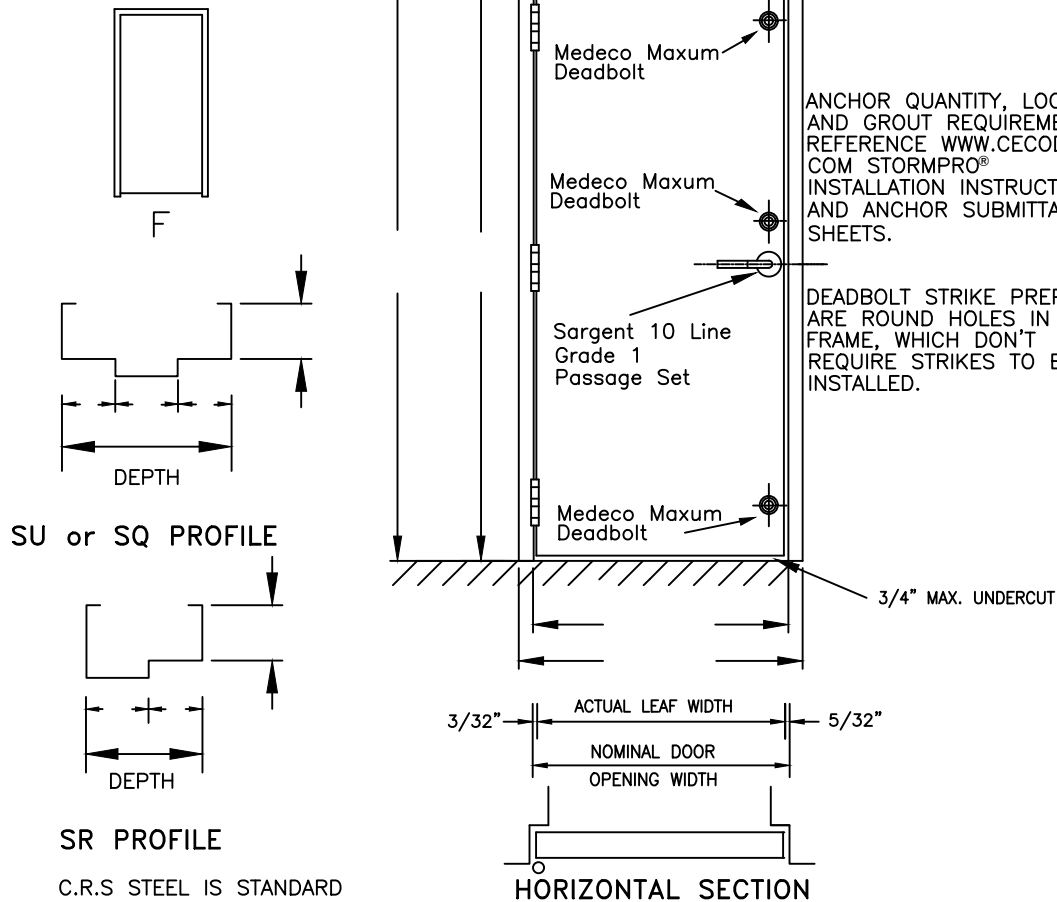


DOOR DESIGN



ANCHOR QUANTITY, LOCATION AND GROUT REQUIREMENTS: REFERENCE WWW.CECODOOR.COM STORMPRO® INSTALLATION INSTRUCTIONS AND ANCHOR SUBMITTAL SHEETS.

DEADBOLT STRIKE PREPS ARE ROUND HOLES IN THE FRAME, WHICH DON'T REQUIRE STRIKES TO BE INSTALLED.

SU or SQ PROFILE

SR PROFILE

C.R.S STEEL IS STANDARD
GALVANNEALED STEEL IS OPTIONAL

STANDARD	SWING DIRECTION	RATING		
		IMPACT	DESIGN (PSF)	TEST (PSF)
ICC 500/NSSA	INSWING OR OUTSWING	15-LB LUMBER 2X4 MISSILE IMPACT @ 100 MPH	+/-254	+/-305
FEMA 320/361	INSWING OR OUTSWING	15-LB LUMBER 2X4 MISSILE IMPACT @ 100 MPH	+/-254	+/-305

StormPro 320 & 361 Tornado Resistant Flush Door & Frame System (Single Swing)

CecoDoor (Conversion: 1" = 25.4 mm, e.g., 1-3/4" = 44.45 mm)

ASSA ABLOY				<u>NOMINAL DOOR SIZE</u> SEE DOOR SCHEDULE	
DRAWN BY _____ DATE _____		CHKD BY _____ DATE _____		<u>INSWING OR OUTSWING</u>	
SHT _____ OF _____	CONTRACT NO. _____		ISSUE DATE _____	REVISIONS _____	BY _____
					SEE DOOR SCHEDULE FOR HAND

1-3/4" DOOR CONSTRUCTION/FEATURES

DOOR CONSTRUCTED WITH 14 GA. STEEL FACE SHEETS, WELDED 12 GA. TOP AND BOTTOM CHANNELS & 14 GA. FULLY WELDED FOR STRENGTH AND APPEARANCE.

THE DOOR IS REINFORCED WITH A FULL HEIGHT 12 GA. VERTICAL STIFFENER ALONG THE LOCK EDGE & HAS 16 GA. INTERMEDIATE STIFFENERS SPACED A MAXIMUM OF 6" APART. POLYSTYRENE FILLER IS USED BETWEEN THE STIFFENERS.

THE DOOR HAS SQUARE LOCK & HINGE EDGES.

FRAME CONSTRUCTION/FEATURES

16 GA. MINIMUM SU, SQ OR SR SERIES, WITH (2) 12 GAGE HIGH FREQUENCY HINGE STRAPS PER HINGE. KD OR WELDED CORNERS.

ANCHOR OPTIONS:

12 GA. MASONRY "T", POURED IN PLACE WALL, SCREWS/BOLTS IN PLATE, EXISTING OPENING WITH 6" BOLTS BY CECO, WIRE MASONRY ANCHORS OR WELD TO BUILDING STRUCTURE ANCHORS PERMITTED. EXISTING OPENING ANCHORS LOCATED IN FRAME HEAD 6" FROM EACH DOOR JAMB RABBET, EXCEPT WHEN WELDED TO BUILDING STRUCTURE OR POURED IN PLACE.

FRAMES ARE NOT REQUIRED TO BE GROUTED WHEN USING EXISTING WALL JAMB ANCHORS OR WHEN WELDED TO BUILDING STRUCTURE

HARDWARE PROVIDED (SHIPPED LOOSE):

- (3) MEDECO MAXUM COMMERCIAL HIGH SECURITY DEADBOLTS 11C602T-26-DL-T-N A, KA3
- (1) SELF LATCHING PASSAGE SET, SARGENT 10 LINE 28-10U15XLLX26DLHR
- (3) MCKINNEY 4-1/2" X 4-1/2" X .180 SP3786 26D HINGES

UL CLASSIFIED TO:

- ICC 500 (2014) "ICC/NSSA Standard for the Design and Construction of "Storm Shelters"
- FEMA P-361 (2015) "Safe Rooms for Tornadoes & Hurricanes: Guidance for Community and Residential Safe Rooms"
- FEMA P-320 (2014) "Taking Shelter from the Storm: Building a Safe Room for Your Home or Small Business"

DESIGNED TO ENDURE TORNADO FORCE WINDS AND FLYING DEBRIS. DEVELOPED TO RESIST MISSILE PENETRATION FOR USE IN BUILDINGS DESIGNED AS SHELTERS OR SAFE ROOMS TO PROTECT OCCUPANTS FROM INJURY. SUCCESSFULLY TESTED AND COMPLIANT TO ICC500-2014 STANDARD.