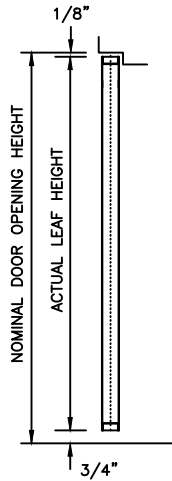
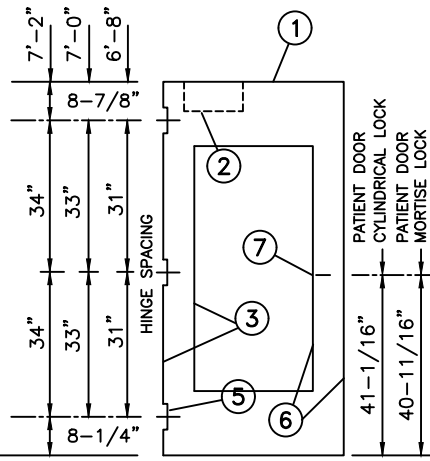
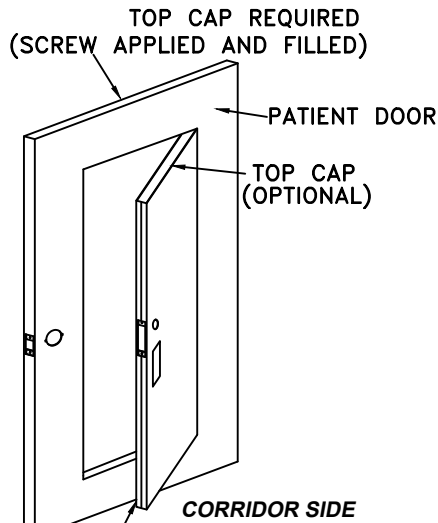
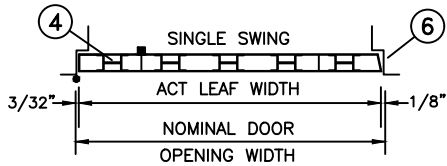


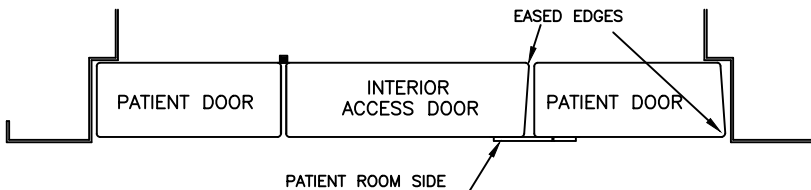
# STEP THROUGH DOOR



DOOR ELEVATION VERTICAL SECTION



HORIZONTAL SECTIONS



A 14 GAGE ONE PIECE FLAT ASTRAGAL IS APPLIED TO PATIENT DOOR ON PATIENT ROOM SIDE OF DOOR. ASTRAGAL COVERS TO TOP, BOTTOM AND LOCK SIDE OF ACCESS DOOR.

ACCESS DOOR 1'8" X 5'0" STANDARD SIZE  
 ACCESS DOOR SPECIAL SIZE \_\_\_\_\_  
 PATIENT DOOR MINIMUM HINGE STILE IS 6"  
 PATIENT DOOR HINGE STILE SIZE \_\_\_\_\_  
 PATIENT DOOR MINIMUM LOCK STILE IS 8"  
 PATIENT DOOR LOCK STILE SIZE \_\_\_\_\_

ACCESS DOOR ATTACHED TO PATIENT DOOR WITH PEMKO CONTINUOUS HINGE #CFMSLF-HD1

20 MIN. OR 45 MINUTE (WARNOCK HERSEY) MAXIMUM FIRE RATING. UL10C & NFPA252

BH-PRA DOOR ACCREDITATION HAS BEEN ACCEPTED BY THE NEW YORK STATE OFFICE OF MENTAL HEALTH

COLD ROLLED STEEL IS STANDARD GALVANNEALED AND GALVANIZED STEEL IS OPTIONAL 16 GAGE STD., 14 GAGE OPTIONAL

### TYPE 11 STANDARD KIT

216 SQUARE INCHES OF VISIBLE GLASS ALLOWED IN FIRE RATED ASSEMBLY.

DOOR FRAME IS A MIN. OF 16 GAGE, KD OR WELDED.

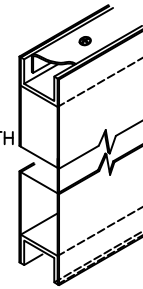
### ① END CHANNELS

INVERTED TOP AND BOTTOM

WELDED TO BOTH FACE SHEETS

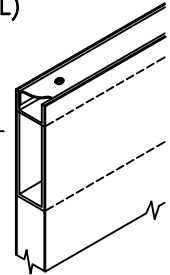
16 GAGE STEEL

BOTTOM CAP (OPTIONAL)



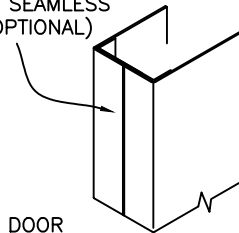
### ② CLOSER REINFORCEMENT (OPTIONAL)

14 GAGE STEEL CHANNEL



### ③ VERTICAL EDGES

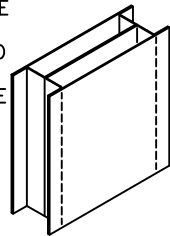
ACCESS DOOR  
 VISIBLE EDGE SEAM (STANDARD)  
 WELDED SEAMLESS EDGE (OPTIONAL)



PATIENT DOOR  
 WELDED EDGE SEAM (STANDARD)  
 VISIBLE SEAM EDGE (OPTIONAL)

### ④ CORE

22 GAGE MIN. STIFFENERS SPACED NOT MORE THAN 6" APART AND SPOT WELDED TO THE FACE SHEETS NOT MORE THAN 6" O.C.



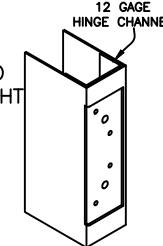
FIBERGLASS INSULATION BETWEEN STIFFENERS

### ⑤ HINGE PREPARATION (PATIENT DOOR)

4-1/2" OR 5" HIGH, STANDARD OR HEAVY WEIGHT FULL MORTISE HINGES

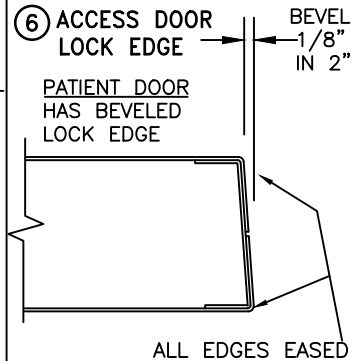
ANSI A156.7 TEMPLATE

HANDED, SQUARE EDGE



### ⑥ ACCESS DOOR LOCK EDGE

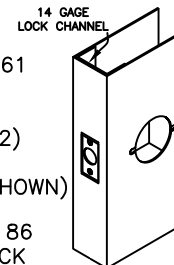
PATIENT DOOR HAS BEVELED LOCK EDGE



### ⑦ PATIENT DOOR LOCK PREPARATIONS

(LC1)  
 GOV. 160/161 CYLINDRICAL LOCK PREP (ANSI A115.2)  
 2-3/4" BACKSET (SHOWN)

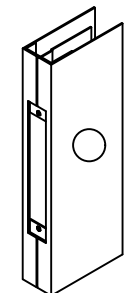
(LM2) GOV. 86 MORTISE LOCK (ANSI A115.1)



### ACCESS DOOR LOCK PREPARATIONS ⑦

MORTISE DEADBOLT PREP

2-3/4" BACKSET



## BEHAVIORAL HEALTHCARE PATIENT ROOM ACCESS OPENING



CENTER SEAM VERTICALLY STEEL STIFFENED, HANDED



(Conversion: 1" = 25.4 mm, e.g., 1-3/4" = 44.45 mm)

DRAWN BY \_\_\_\_\_ DATE \_\_\_\_\_  
 CHK'D BY \_\_\_\_\_ DATE \_\_\_\_\_

SHT \_\_\_\_\_ OF \_\_\_\_\_ CONTRACT NO. \_\_\_\_\_

ISSUE DATE	REVISIONS	BY	FOR HAND & SWING SEE DOOR SCHEDULE
------------	-----------	----	---------------------------------------