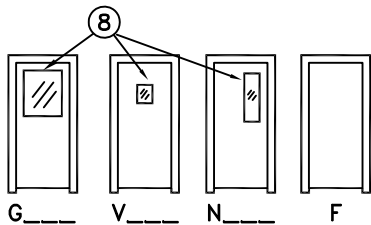
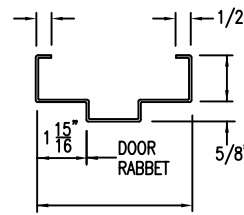


**DOOR DESIGNS**

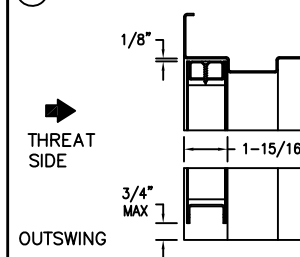


BALLISTIC LEVEL	WEAPON TYPE	BULLET TYPE	BULLET VELOCITY	MUZZLE ENERGY
I	9mm	FULL METAL JACKET 124gr	1234 ft/s	380-460 ft/lbs
II	.357 Mag.	JACKETED LEAD POINT 158gr	1312 ft/s	743-889 ft/lbs
III	.44 Mag.	LEAD SOFT POINT 240gr	1417 ft/s	1370-1593 ft/lbs

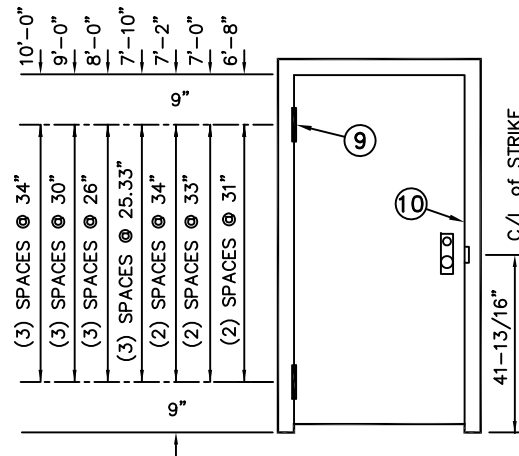
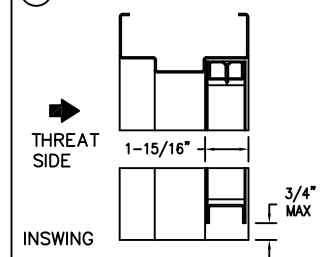
**TYPICAL PROFILE**



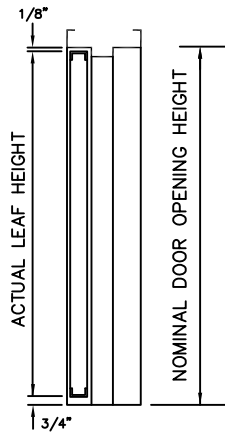
**① VERTICAL SECTION**



**② VERTICAL SECTION**



**ELEVATION**



**VERTICAL SECTION**

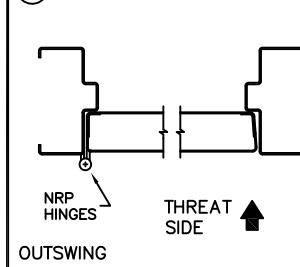
The ArmorShield system is rated for super power small arms (Level 3) and is intended for architectural environments with equivalent bullet resistance. The system has not been tested for resistance to forced entry. Field assembly of the welded frame and door is required as is preparation for surface applied hardware. System shall be installed securely by contractor in a manner to achieve the intended functional operation and appearance. The door and frame must be finish color painted after delivery to site

**Fire Rating: (optional)**  
 TEST: UL10B, UL10C, NFPA252 & UL1784  
 UL 1-1/2 hour maximum rating  
 Flush doors only

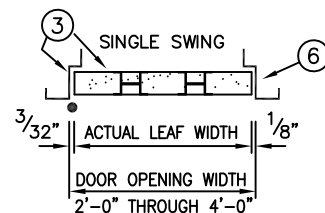
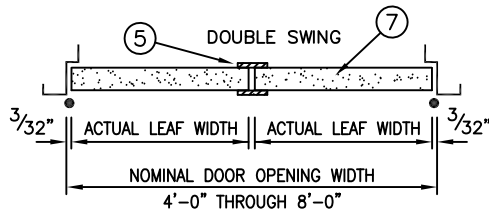
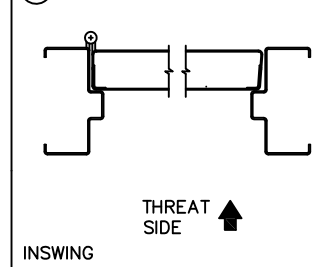
**Material:**  
 Frame: 12 gage Cold Rolled, galvanized or galvanized steel  
 Doors: 12 gage Cold Rolled, galvanized or galvanized steel  
 Finish: Primed for field painting

**Reinforcements:**  
 Hinge: 7 gage steel  
 Cylindrical Lock: 12 gage steel  
 Mortise Lock: 12 gage steel  
 Mortise Exit Device: 12 gage steel  
 Rim Exit: 14 gage steel  
 Closer: (optional) 14 gage steel  
 Electric strikes: (optional) as necessary to meet hardware requirements

**③ HORIZONTAL SECTION**

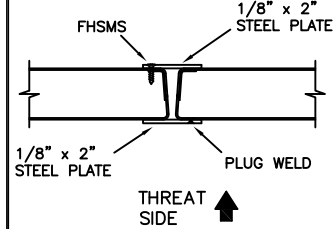


**④ HORIZONTAL SECTION**

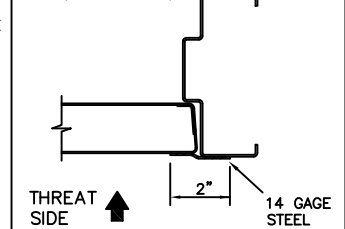


**HORIZONTAL SECTIONS**

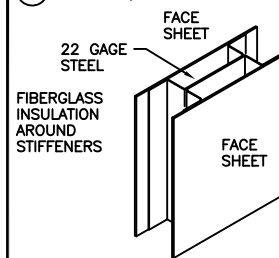
**⑤ ASTRAGAL FOR MEETING STILES**



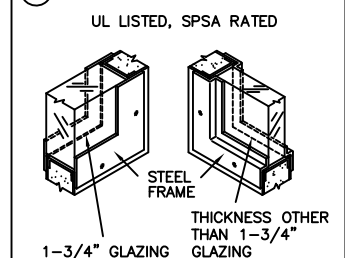
**⑥ LOCK PROTECTION PLATE (OPTIONAL)**



**⑦ CORE (STEEL STIFFENED)**



**⑧ GLASS -- UL LISTED**



**1-3/4" ARMORSHIELD (AS) UL LISTED BULLET RESISTANT DOOR SYSTEM**

TESTED IN ACCORDANCE WITH UL STANDARD FOR SAFETY -- BULLET RESISTANT EQUIPMENT TEST: UL 752

**VERTICALLY STEEL STIFFENED CORE ( LEVEL 1, 2, & 3 )**  
 (Conversion: 1" = 25.4 mm, e.g., 1-3/4" = 44.45 mm)

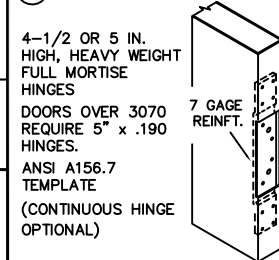


DRAWN BY \_\_\_\_\_ DATE \_\_\_\_\_  
 CHK'D BY \_\_\_\_\_ DATE \_\_\_\_\_  
 SHT \_\_\_\_\_ CONTRACT NO. \_\_\_\_\_  
 OF \_\_\_\_\_

ISSUE DATE \_\_\_\_\_  
 REVISIONS \_\_\_\_\_  
 BY \_\_\_\_\_

FOR HAND & SWING  
 SEE DOOR SCHEDULE

**⑨ HINGE PREPARATION**



**⑩ LOCK EDGE**

