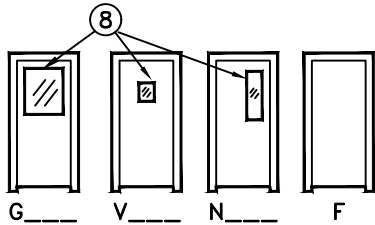
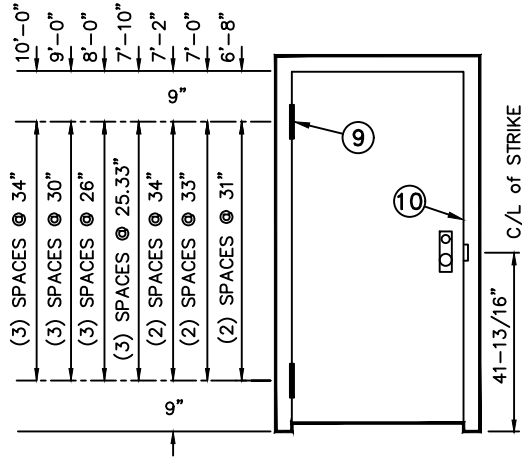
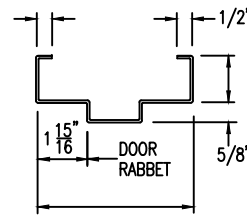


DOOR DESIGNS

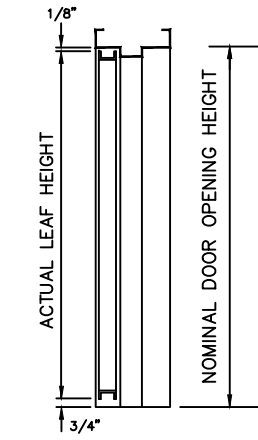


BALLISTIC LEVEL	WEAPON TYPE	BULLET TYPE	BULLET VELOCITY	MUZZLE ENERGY
I	9mm	FULL METAL JACKET 124gr	1234 ft/s	380-460 ft/lbs
II	.357 Mag.	JACKETED LEAD POINT 158gr	1312 ft/s	743-889 ft/lbs
III	.44 Mag.	LEAD SOFT POINT 240gr	1417 ft/s	1370-1593 ft/lbs

TYPICAL PROFILE



ELEVATION



VERTICAL SECTION

The ArmorShield system is rated for super power small arms (Level 3) and is intended for architectural environments with equivalent bullet resistance. The system has not been tested for resistance to forced entry or fire protection. Field assembly of welded frame and door is required as is preparation for surface applied hardware. System shall be installed securely by contractor in a manner to achieve the intended functional operation and appearance. The door and frame must be finish color painted after delivery to site.

Horizontal and vertical sections shown at left depict outswinging armor conditions. See construction details 2 and 4 at right for inswing armor conditions.

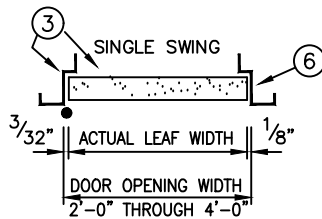
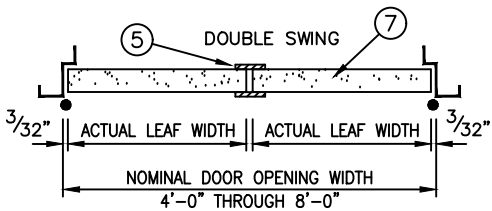
Material:

Frame: 12 gage Cold Rolled, galvanized or galvanized steel
 Doors: 12 gage Cold Rolled, galvanized or galvanized steel
 Finish: Primed for field painting

Reinforcements:

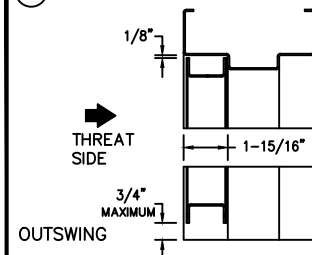
Hinge: 7 gage steel
 Cylindrical Lock: 12 gage steel
 Mortise Lock: 12 gage steel
 Mortise Exit Device: 12 gage steel
 Rim Exit: 14 gage steel
 Closer: (optional) 14 gage steel
 Cylindrical, rim or mortise exit hardware.

Electric strikes: (optional) as necessary to meet hardware requirements

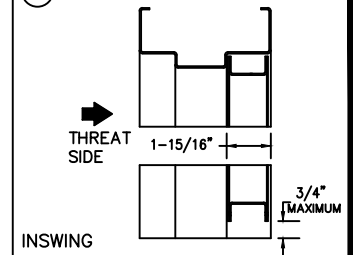


HORIZONTAL SECTIONS

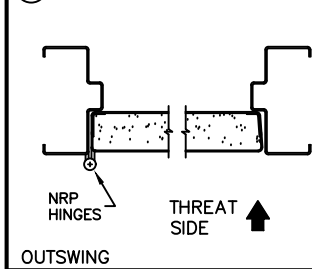
① VERTICAL SECTION



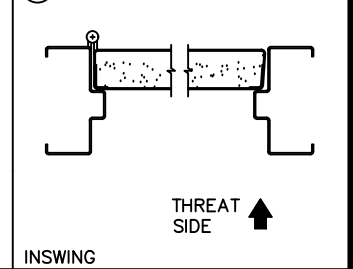
② VERTICAL SECTION



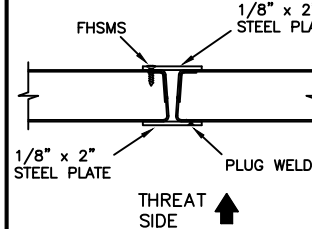
③ HORIZONTAL SECTION



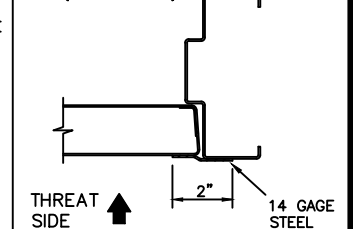
④ HORIZONTAL SECTION



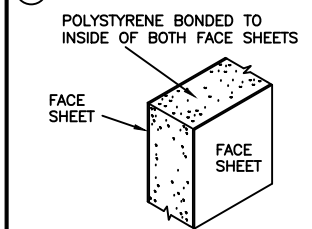
⑤ ASTRAGAL FOR MEETING STILES



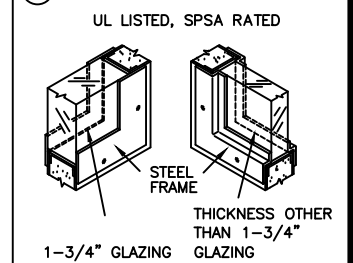
⑥ LOCK PROTECTION PLATE (OPTIONAL)



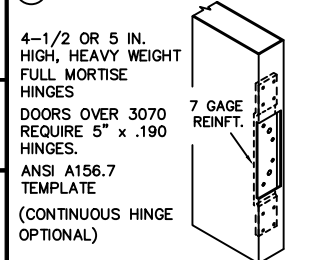
⑦ CORE (POLYSTYRENE)



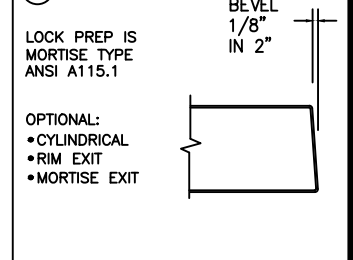
⑧ GLASS -- UL LISTED



⑨ HINGE PREPARATION



⑩ LOCK EDGE



1-3/4" ARMORSHIELD (AP) UL LISTED BULLET RESISTANT DOOR SYSTEM

TESTED IN ACCORDANCE WITH UL STANDARD FOR SAFETY -- BULLET RESISTANT EQUIPMENT TEST: UL 752

POLYSTYRENE CORE (LEVEL 1, 2, & 3)



(Conversion: 1" = 25.4 mm, e.g., 1-3/4" = 44.45 mm)



DRAWN BY _____ DATE _____
 CHK'D BY _____ DATE _____
 SHT _____ CONTRACT NO. _____
 OF _____

ISSUE DATE _____ REVISIONS _____ BY _____

FOR HAND & SWING SEE DOOR SCHEDULE