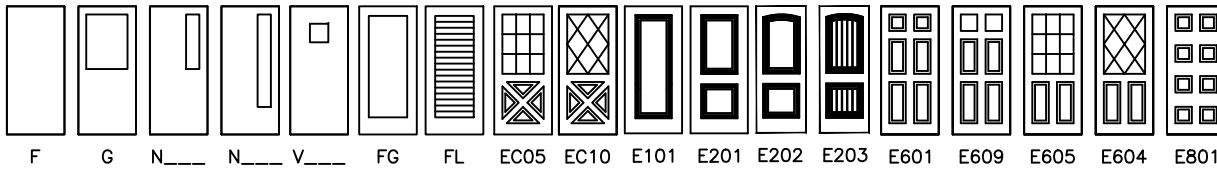


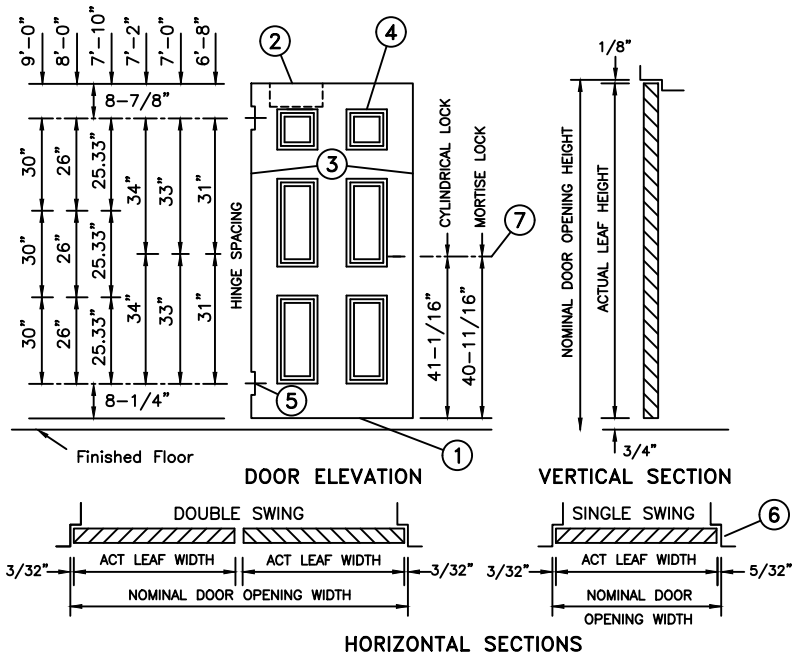
DOOR DESIGNS



Rigid-plastic trim kits for glass including 1/8" safety glass and glazing (conforming to CPSC Standard 16 CFR 1201 and to ANSI Z-97.1) is standard for embossed non-fire rated doors. 1/2" insulating glass is also available in selected designs.

Flush doors with lite cutouts are typically furnished with metal trim kits for lites. Glass and glazing are not included, unless included in contract. Horizontal muntins are available to make various designs. N designs are available in multiple widths & heights. FL designs utilize a 4634 fixed-slat louver.

- Mortise lock prep not available on panel door designs under 3'-0" wide.
- 1 & 2-Panel is available in 18 gage only.
- Panel design door face sheets are formed from A40 galvanized steel.
- Flush design door face sheets are formed from cold rolled or galvanized steel.
- 8 & crossback panel designs are available in 20 & 18 gage.
- 6 panel is available in 20, 18, & 16 gage.



1-3/4" VERSADOOR (VU)

FLUSH DESIGNS: 20, 18 or 16 GAGE STEEL

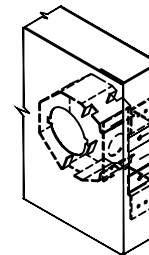


(Conversion: 1" = 25.4 mm, e.g., 1-3/4" = 44.45 mm)

FIRE DOORS
 TEST: UL10B, UL10C, NFPA252 & UL1784
 LABELING AGENCIES:
 UL LLC
 WARNOCK HERSEY
 DESIGNS: F, G, N, V, E1, E2, E6, E8 & ECB.
 RATING: 20 MIN THRU 1-1/2 HR
 MAX. SIZE:
 (20 GAGE) 4'0"x7'0" SINGLE
 6'0"x7'0" PAIR
 RATING: 20 MIN THRU 3 HR
 MAX. SIZE:
 (18 & 16 GAGE) 4'0"x7'0" SINGLE
 6'0"x7'0" PAIR

LOCK PREPARATION ⑦

(LC1)
 GOV. 160/161
 CYLINDRICAL
 LOCK PREP
 (ANSI A115.2)
 2-3/4"
 BACKSET

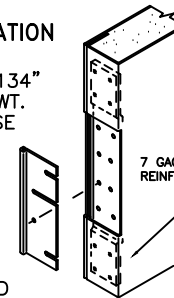


⑤ HINGE PREPARATION

4-1/2" x .134"
 HIGH. STD. WT.
 FULL MORTISE
 HINGE
 PREPS

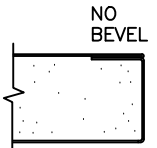
CLOSURE
 PLATES
 INCLUDED

NON-HANDED



⑥ LOCK EDGE

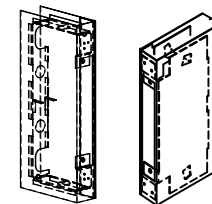
LOCK
 EDGE IS
 PARALLEL
 TO JAMB
 RABBET



LOCK PREPARATION GOV. 86, ANSI/BHMA A115.1 MORTISE TYPE ⑦

(LMO)

NOTE: EITHER OF THE LOCK REINFORCEMENTS/GUARDS SHOWN MAY BE INSTALLED WITH ANY MORTISE LOCK PREPARATION.



ASSA ABLOY		FOR HAND & SWING SEE DOOR SCHEDULE		THERMAL INSULATION VALUE SOUND TRANSMISSION PHYSICAL ENDURANCE TEST DATA	NFRC 102-2014 & ASTM FLUSH DOOR/MERCURY FRAME R = 2.63 U = 0.38 CORE CALCULATED (ASTM C518) R = 11.01 U = 0.091 SOUND TRANSMISSION CLASS (STC): 26 F DESIGN, 18 GAGE STEEL FACE SHEETS -- ASTM E90 & E413 (FULLY OPERABLE)
DRAWN BY _____ DATE _____ CHK'D BY _____ DATE _____	SHT _____ CONTRACT NO. _____ OF _____	ISSUE DATE _____	REVISIONS _____	BY _____	MEETS OR EXCEEDS ANSI A250.4 PERFORMANCE TEST; 20 gage steel (500,000 cycles); 18 & 16 gage steel (1,000,000 cycles).

Experience a safer and more open world