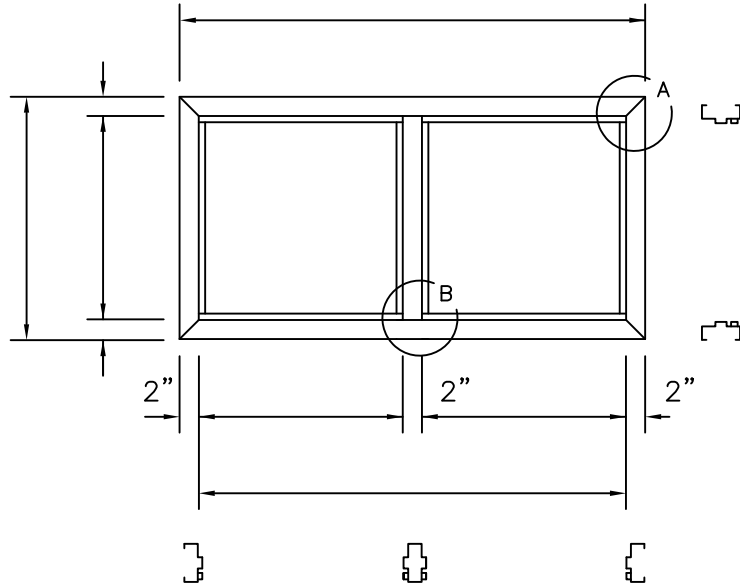
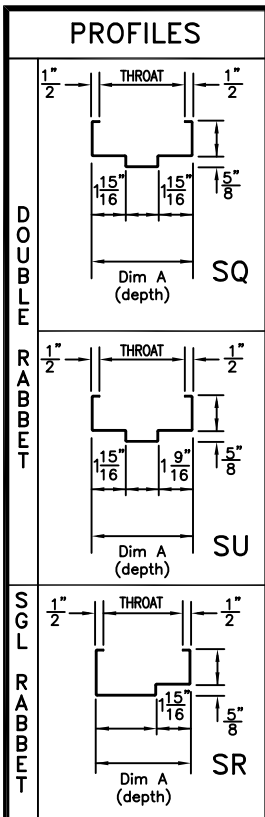
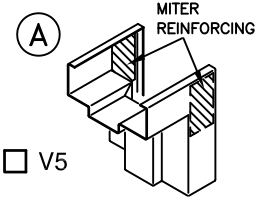


For construction illustrations see page(s): \_\_\_\_\_.



RATING ▶	MEDIUM POWER LEVEL 1	HIGH POWER LEVEL 2	SUPER POWER LEVEL 3
SMALL ARMS	SUPER 38 AUTOMATIC	.357 MAGNUM REVOLVER	.44 MAGNUM REVOLVER
BARREL LENGTH	5"	8 1/4"	6 1/2"
BULLET TYPE	METAL CASE 130 GRAIN	SOFT POINT 158 GRAIN	SOFT POINT 240 GRAIN
MUZZEL VELOCITY	1280 FPS	1450 FPS	1470 FPS
MUZZEL ENERGY	475 FT-LB	740 FT-LB	1150 FT-LB

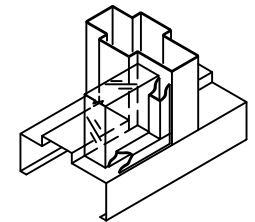
**WELDED CORNERS**



MITERED AND WELDED CORNER -- HEAD AND JAMB FACES MUST BE EQUAL

**GLASS -- UL LISTED**

UL LISTED, SPSA RATED MIN. SIZE: 12" x 12" GLASS THICKNESS VARIES



GLASS AND GLAZING BY OTHERS UNLESS INCLUDED IN CONTRACT

12 ga. Cold rolled steel is standard.  
12 ga. Galvanized steel is optional.

ELEVATION \_\_\_\_\_  
MARK \_\_\_\_\_

ARMORSHIELD DEPTHS	
Profile	Dim A
Double Rabbet:	5-1/4" - 13-7/8"
Single Rabbet:	4-5/8" - 5-1/8"

The ArmorShield system is rated for super power small arms (level 3) and is intended for architectural environments with equivalent bullet resistance. The system has not been tested for resistance to forced entry. Field assembly of welded frame and door is required as is preparation for surface applied hardware. System shall be installed securely by contractor in a manner to achieve the intended functional operation and appearance. The door and frame must be finish color painted after delivery to site.

**Ceco Door** (Conversion: 1" = 25.4 mm, e.g., 1-3/4" = 44.45 mm)

**ASSA ABLOY**

DRAWN BY _____ DATE _____		ISSUE DATE	REVISIONS	BY
CHK'D BY _____ DATE _____				
SHT _____ OF _____	CONTRACT NO. _____			

**LEVEL 1, 2, & 3 ARMORSHIELD  
UL LISTED BULLET RESISTANT  
2BL SYSTEM**

TESTED IN ACCORDANCE WITH BULLET RESISTANT EQUIPMENT TEST: UL 752

**ALL INTERSECTIONS ARE  
FACE WELDED AND GROUND  
SMOOTH.**

FOR HAND & SWING SEE DOOR SCHEDULE	
FOR ANCHORAGE SEE DOOR SCHEDULE & ANCHOR SHEET (DO NOT USE WS, MS, OR FFA TYPE)	