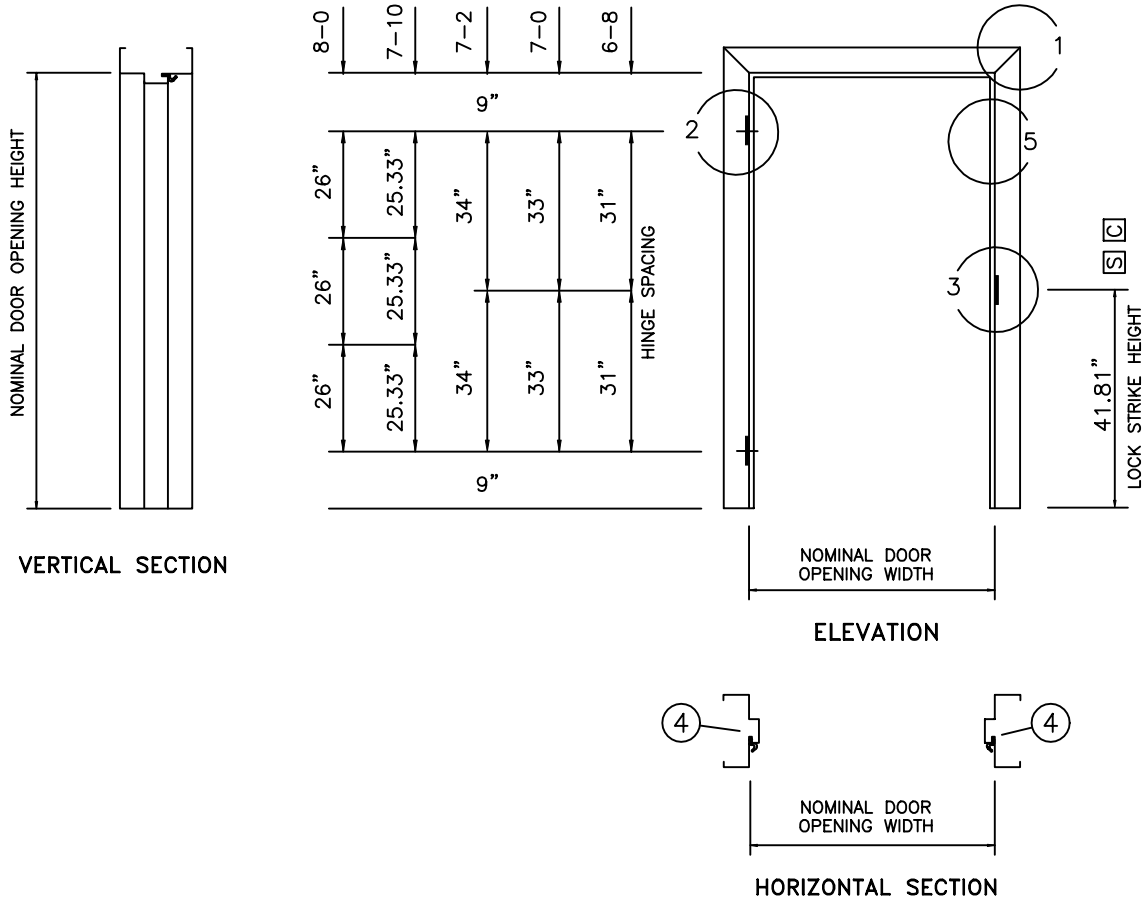


F9-2

Hardware locations shown match Ceco standard doors.

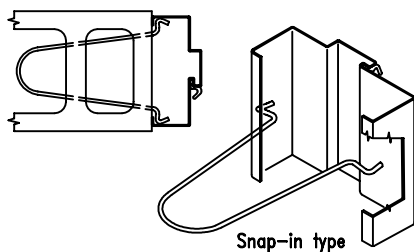


(Conversion: 1" = 25.4 mm, e.g., 1-3/4" = 44.45 mm)

JAMB ANCHOR QUANTITIES

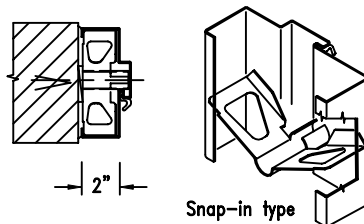
3 PER JAMB FOR HEIGHTS UP TO 7-2 AND ONE FLOOR ANCHOR
 4 PER JAMB FOR HEIGHTS FROM 7-3 THRU 9-0 AND ONE FLOOR ANCHOR
 ONE ADDITIONAL JAMB ANCHOR FOR EACH ADDITIONAL TWO FEET IN HEIGHT OR FRACTION THEREOF
 ONE ADDITIONAL JAMB ANCHOR IN LIEU OF FLOOR ANCHOR FOR EO AND WS TYPE CONDITIONS

WIRE MASONRY ANCHOR WMA



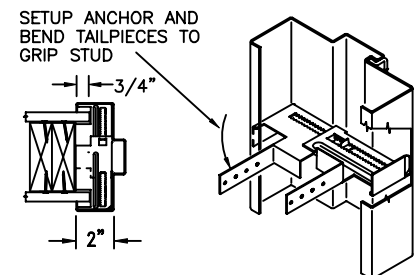
(For 2" thru 8-3/4" Depths)

EXISTING OPENING ANCHOR EO



EO/S6: 4-1/2" thru 6-3/4" depth
 EO/S8: 6-7/8" thru 9-3/4" depth

ADJUSTABLE ANCHOR FOR STUD WALLS ADJ/STUD



3-3/4" thru 8-3/4" depth

6/1/01

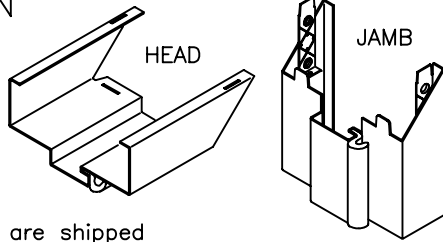


TECH-DATA

SERIES SQW AND SRW KERFED FRAMES

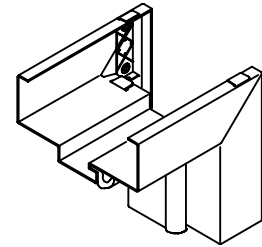
F9-3

1 KNOCKED DOWN CORNER CONSTRUCTION



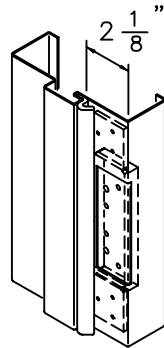
Components are shipped "knocked down" and assembled at the job site

2 WELDED CORNERS



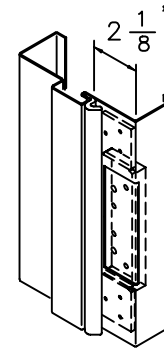
Die-cut corner with corner tab and face weld shown. Also available without tab and welded or mitre sawed and welded. Alternative weld options are also available.

3 HINGE PREPARATION



4-1/2" x .134" OR
4-1/2" x .180"
ANSI A156.7 TEMPLATE
7 GAGE STEEL REINFORCEMENT
& 26 GAGE STEEL PLASTER GUARD

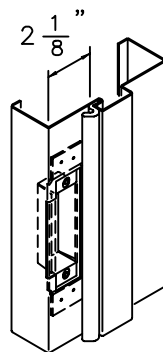
4 HINGE PREPARATION



5" x .146" OR
5" x .190"
ANSI A156.7 TEMPLATE
7 GAGE STEEL REINFORCEMENT
& 26 GAGE STEEL PLASTER GUARD

5 LOCK STRIKE PREPARATION

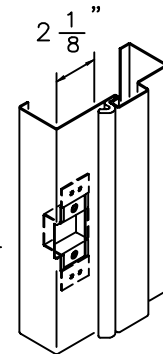
S



UNIVERSAL (4-7/8")
ANSI A115.1 & 2 TEMPLATE
12 GAGE STEEL REINFORCEMENT
& 26 GAGE PLASTER GUARD

6 LOCK STRIKE PREPARATION (OPTIONAL)

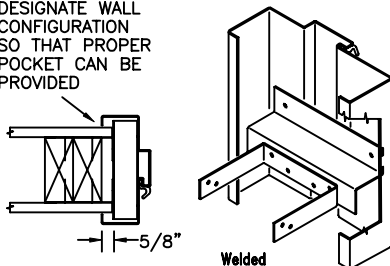
C



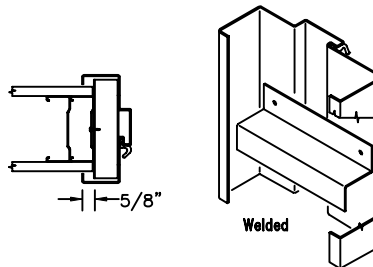
CYLINDRICAL (2-3/4")
ANSI A115.2 TEMPLATE
16 GAGE STEEL REINFORCEMENT
& PLASTER GUARD.
ALSO AVAILABLE WITHOUT LIP NOTCH FOR DEADBOLTS.

8 WOOD STUD "Z" STRAP ANCHOR WSZS

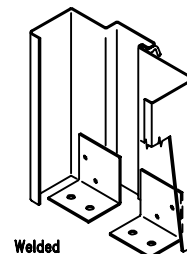
DESIGNATE WALL CONFIGURATION SO THAT PROPER POCKET CAN BE PROVIDED



8 METAL STUD "Z" ANCHOR MSZ1



9 SPECIAL SIZE FLOOR ANCHOR SFA



6/1/01



Ceco Door Products

F9-4

STANDARD SIZES NOMINAL DOOR OPENING

WIDTH		HEIGHT
SINGLE	DOUBLE	
2'-0"	4'-0"	6'-8" 7'-0" 7'-2" 7'-10" 8'-0"
2'-4"	4'-8"	
2'-6"	5'-0"	
2'-8"	5'-4"	
2'-10"	5'-8"	
3'-0"	6'-0"	
3'-4"	6'-8"	
3'-6"	7'-0"	
3'-8"	7'-4"	
3'-10"	7'-8"	
4'-0"	8'-0"	

PRODUCT SPECIFICATIONS:

Steel door frames shall be as manufactured by Ceco Door Products, Milan, TN or Oklahoma City, OK, USA. They shall conform to the Steel Door Institute guide specification, ANSI A250.8-1998. See chart below for performance classifications.

Series SQW and SRW frames for 1-3/4" doors are formed from commercial quality cold rolled steel conforming to ASTM A366 or A620 & A568 ...or (optional) hot-dipped galvanized steel conforming to ASTM A924 and A653 - see chart below.

Frames are knocked down (K.D.) field assembled type or welded unit type. Head and jamb members of K.D. frames have diecut mitered corners that interlock rigidly when field assembled. Door stops are 5/8" high and have an integral kerf with foam filled, fire rated, compression type gasket (weatherstrip). Single or double rabbet profile sizes are available in depths from 3" thru 14" (in 1/8" increments). Twist-in anchors are available for new masonry, wood stud, metal stud or existing opening wall conditions (indicate which). Welded floor anchors or extra jamb anchors are provided to anchor sill. Welded-in jamb anchors are also available.

Hardware Provisions: Frames are handed. Hinge jambs are mortised for 4-1/2" or 5" high, standard and heavy weight hinges (specify which). 7 gage steel reinforcements are welded in place and are drilled and tapped for fasteners in accordance with ANSI A156.7. The strike jamb is prepared for 4-7/8" universal or 2-3/4" cylindrical strike in accordance with ANSI A 115.1&2 (specify which). Plaster guards are 26 gage steel. Optional hardware reinforcement (for O/H closer or holder) is 14 gage minimum steel welded in place.

Paint: Steel door frames are provided with one coat of oven-cured neutral color primer paint. Primer coat shall conform with ANSI A250.10. The primer coat is a preparatory base for necessary finish painting.

FIRE DOOR FRAMES

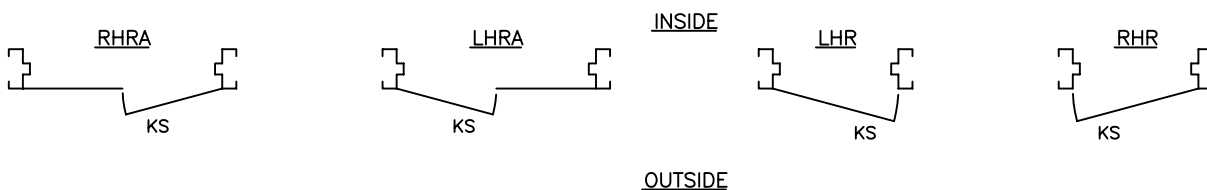
LABELING AGENCY: <ul style="list-style-type: none"> • UNDERWRITERS LABORATORY • WARNOCK HERSEY
TEST: ASTM E-152, UL10B, UBC 43-2 <ul style="list-style-type: none"> • RATING: 20 MIN, 3/4 HR, 1 HR, 1-1/2 HR, OR 3 HR • MAX. SIZE: 40 x 80 SINGLE 80 x 80 PAIR <p>Not all ratings are available in all sizes, elevations, and materials. Hourly ratings are not shown on label unless rating is less than 3 hours.</p>

MATERIAL

DOOR FRAME MATERIAL	GRADE	C.R.	GALV	
			A60	G90
16 Gage Steel	Standard Duty or Heavy Duty	STD	OPT	OPT
14 Gage Steel	Extra Heavy Duty	OPT	OPT	OPT

PERFORMANCE

Physical Endurance Level:	Meets S.D.I. 119 Performance Test, Level A (1,000,000 Cycles)
---------------------------	---



"SUFFIX"A" = ACTIVE LEAF OF PAIRS

9/1/05



Ceco Door Products